

MARTIN® Electric Vibrators



CD Series



CDX Series



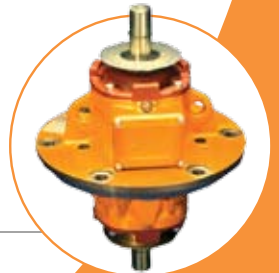
Stainless Steel Series



Low-Speed Series



MTF Series



MVB Series

Electric Vibrators • Series CD36

Mechanical & Electrical Features

SPEED	
RPM	HZ
3000	50
3600	60

For 230 volt, 60 Hz amperage
double the 460 volt amperage.

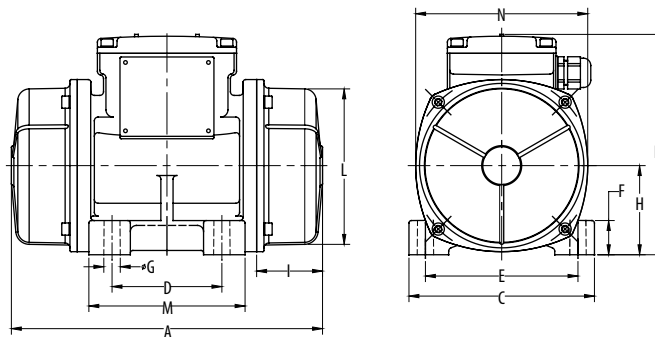
Part Number	Model	Frame Size	MECHANICAL FEATURES						ELECTRICAL FEATURES			
			Unbalance <i>in-lbs</i>		Centrifugal Force <i>lbs</i>		Weight <i>lbs</i>		Power Output <i>Horsepower</i>		Max. Current <i>Amps</i>	
			50 Hz	60 Hz	50 Hz	60 Hz	50 Hz	60 Hz	50 Hz	60 Hz	50 Hz / 380 V	60 Hz / 460 V
C600311	CD36-380	00	1.00	1.00	269	385	9.04	9.04	0.17	0.17	0.35	0.30
C600312	CD36-480	01	1.82	1.30	467	482	10.91	10.14	0.17	0.17	0.35	0.30
C600313	CD36-660	10	2.61	1.77	670	653	18	17	0.24	0.25	0.60	0.50
C600314	CD36-1050	20	4.33	2.81	1109	1038	27	26	0.45	0.52	0.80	0.75
C600381	CD36-1680	30	6.77	4.51	1730	1662	37	35	0.67	0.70	1.1	1.0
C600243	CD36-2900	AF33	11.12	7.95	2842	2923	68	65	1.4	1.4	2.1	1.9
C600254	CD36-3280	AF50	13	9	3404	3267	82	78	1.5	1.5	2.3	2.0
C600256	CD36-4100	AF50	18	11	4537	4083	105	100	2.2	2.2	3.5	3.0
C600257	CD36-4910	AF50	20	13	5104	4901	107	102	2.2	2.2	3.5	3.0
C600199	CD36-6860	AF70	30	19	7621	6859	207	198	4.5	4.6	6.5	5.6
C600219	CD36-8240	AF70	34	22	8574	8232	212	203	4.5	4.6	6.5	5.6
C600212	CD36-11000	AF70	45	30	11433	10975	240	231	5.5	5.8	7.6	6.9
C600276	CD36-14000	90	55	38	13985	14125	405	392	6.0	6.1	9.2	8.0
C600201	CD36-20000	95	78	54	19855	19773	474	463	10.9	10.1	18.0	13.0

Electric Vibrators

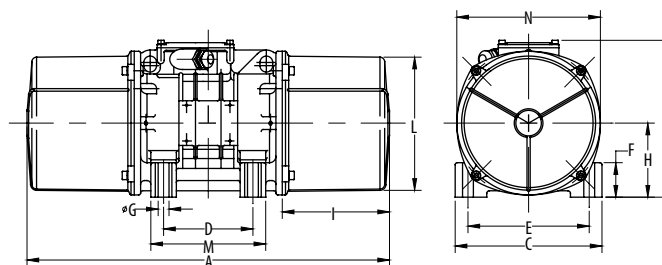
Overall Dimensions (inches)



P/N	Model	Frame Size	Type	A	B	C	D	E	F	Foot Holes		H	I	L	M	N
										ØG	No.					
C600311	CD36-380	00	A	8.31	6.02	4.92	2.44 - 2.91	4.17	0.95	0.35	4	2.40	1.83	4.06	3.94	4.61
C600312	CD36-480	01	A	9.25	6.02	4.92	2.44 - 2.91	4.17	0.95	0.35	4	2.40	2.30	4.06	3.94	4.61
C600313	CD36-660	10	A	10.04	7.05	5.98	3.54	4.92	1.10	0.51	4	2.87	2.13	5.00	5.04	5.55
C600314	CD36-1050	20	A	11.34	7.99	6.57	4.13	5.51	1.18	0.51	4	3.25	2.56	5.71	5.51	6.30
C600381	CD36-1680	30	A	12.10	8.50	8.07	4.72	6.69	1.77	0.67	4	3.68	2.48	6.69	6.30	7.16
C600243	CD36-2900	AF33	B	14.21	8.37	8.46	3.94	7.09	1.85	0.67	4	3.60	2.56	6.30	5.51	6.89
C600254	CD36-3280	AF50	B	16.93	9.06	9.06	5.51	7.48	1.93	0.67	4	4.09	2.76	7.17	7.09	7.72
C600256	CD36-4100	AF50	B	18.31	9.06	9.06	5.51	7.48	1.93	0.67	4	4.09	2.76	7.17	7.09	7.72
C600257	CD36-4910	AF50	B	18.31	9.06	9.06	5.51	7.48	1.93	0.67	4	4.09	2.76	7.17	7.09	7.72
C600199	CD36-6860	AF70	B	21.97	11.97	12.20	6.10	10.04	3.54	0.98	4	5.12	4.25	9.17	8.27	9.76
C600219	CD36-8240	AF70	B	21.97	11.97	12.20	6.10	10.04	3.54	0.98	4	5.12	4.25	9.17	8.27	9.76
C600212	CD36-11000	AF70	B	21.97	11.97	12.20	6.10	10.04	3.54	0.98	4	5.12	4.25	9.17	8.27	9.76
C600276	CD36-14000	90	B	26.77	14.61	15.35	7.87	12.60	3.54	1.10	4	7.09	6.22	12.99	10.63	13.78
C600201	CD36-20000	95	B	24.76	15.55	15.43	7.87	12.60	3.94	1.10	4	7.56	5.31	13.78	10.63	14.76



Type A



Type B

Electric Vibrators • Series CD18

Mechanical & Electrical Features

SPEED	
RPM	HZ
1500	50
1800	60

For 230 volt, 60 Hz amperage
double the 460 volt amperage.

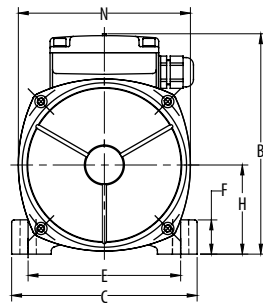
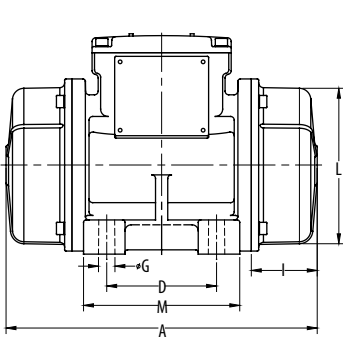
Part Number	Model	Frame Size	MECHANICAL FEATURES						ELECTRICAL FEATURES			
			Unbalance <i>in-lbs</i>		Centrifugal Force <i>lbs</i>		Weight <i>lbs</i>		Power Output <i>Horsepower</i>		Max. Current <i>Amps</i>	
			50 Hz	60 Hz	50 Hz	60 Hz	50 Hz	60 Hz	50 Hz	60 Hz	50 Hz / 380 V	60 Hz / 460 V
C601340	CD18-100	00	1.00	1.00	68	97	10	10	0.05	0.06	0.2	0.2
C601341	CD18-180	01	2.69	1.80	174	169	12	11	0.05	0.06	0.2	0.2
C601367	CD18-480	10	7.31	5.10	470	471	23	22	0.13	0.13	0.4	0.4
C601372	CD18-920	20	14	10	908	904	37	34	0.29	0.37	0.6	0.6
C601373	CD18-1310	20	19	14	1217	1305	42	39	0.29	0.37	0.6	0.6
C601408	CD18-1690	30	25	18	1587	1675	52	49	0.51	0.66	0.9	1.0
C601201	CD18-2150	35	36	24	2302	2163	77	67	0.54	0.67	1.0	1.0
C601217	CD18-3190	40	49	35	3115	3195	97	90	1.0	1.2	1.5	1.5
C601219	CD18-3870	50	62	42	3962	3871	129	120	1.1	1.2	2.0	1.9
C601267	CD18-4500	50	71	49	4533	4485	154	150	1.3	1.5	2.5	2.3
C601220	CD18-5380	60	83	59	5333	5386	181	181	1.8	1.9	3.2	3.0
C601268	CD18-6850	60	107	74	6849	6851	203	196	2.1	2.2	3.8	3.5
C601221	CD18-8300	70	132	90	8464	8252	254	254	2.4	2.8	3.9	3.9
C601269	CD18-9400	70	149	102	9539	9373	269	257	2.9	3.2	4.8	4.7
C601211	CD18-10900	80	173	118	11036	10891	354	337	4.0	3.7	6.0	5.0
C601165	CD18-14500	90	225	158	14409	14551	459	430	6.7	7.0	10.5	9.0
C601166	CD18-17600	95	283	196	18076	18040	496	463	7.6	8.9	11.6	11.5
C601204	CD18-19700	97	290	214	18554	19656	699	668	8.0	9.2	12.2	12.0
C601205	CD18-25300	100	394	275	25197	25278	955	906	11.5	12.3	17.5	15.5
C601271	CD18-32000	100	487	358	31135	32943	1010	935	-	-	20	20

Electric Vibrators

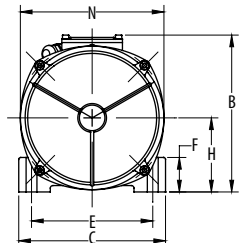
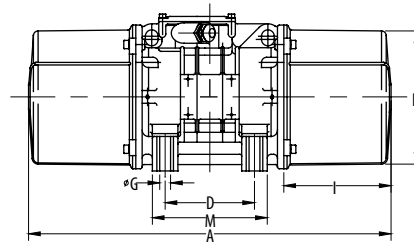
Overall Dimensions (inches)



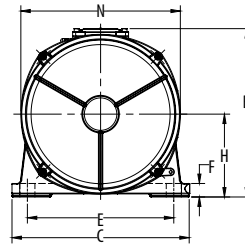
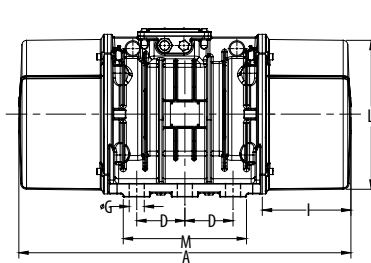
P/N	Model	Frame Size	Type	A	B	C	D	E	F	Foot Holes		H	I	L	M	N
										ØG	No.					
C601340	CD18-100	00	A	8.31	6.02	4.92	2.44 - 2.84	4.17	0.95	0.35	4	2.40	1.83	4.06	3.94	4.61
C601341	CD18-180	01	A	9.25	6.02	4.92	2.44 - 2.84	4.13	0.94	0.35	4	2.40	2.28	4.06	3.94	4.61
C601367	CD18-480	10	A	11.83	7.05	5.98	3.54	4.92	1.10	0.51	4	2.87	3.03	5.00	5.04	5.55
C601372	CD18-920	20	A	13.54	7.99	6.57	4.13	5.51	1.18	0.51	4	3.25	3.68	5.71	5.51	6.30
C601373	CD18-1310	20	A	15.20	7.99	6.57	4.13	5.51	1.18	0.51	4	3.25	4.48	5.71	5.51	6.30
C601408	CD18-1690	30	A	15.51	8.50	8.07	4.72	6.69	1.77	0.67	4	3.68	4.17	6.69	6.30	7.16
C601201	CD18-2150	35	B	17.13	9.17	8.07	4.72	6.69	2.13	0.67	4	4.11	4.63	7.36	6.38	7.99
C601217	CD18-3190	40	B	18.66	9.69	9.06	5.51	7.48	2.13	0.67	4	4.57	4.25	8.27	7.09	8.86
C601219	CD18-3870	50	B	19.69	9.69	9.06	5.51	7.48	2.13	0.67	4	4.57	5.28	8.27	7.09	8.86
C601267	CD18-4500	50	B	22.36	9.69	9.06	5.51	7.48	2.13	0.67	4	4.57	6.61	8.27	7.09	8.86
C601220	CD18-5380	60	B	21.14	10.94	10.83	6.10	8.86	2.76	0.87	4	5.31	5.39	9.37	8.07	9.96
C601268	CD18-6850	60	B	24.29	10.94	10.83	6.10	8.86	2.76	0.87	4	5.31	6.97	9.37	8.07	9.96
C601221	CD18-8300	70	B	22.99	12.64	12.20	6.10	10.04	3.03	0.93	4	6.18	5.39	10.91	8.46	11.61
C601269	CD18-9400	70	B	22.99	12.64	12.20	6.10	10.04	3.03	0.93	4	6.18	5.39	10.91	8.46	11.61
C601211	CD18-10900	80	B	24.80	13.66	13.39	7.09	11.02	3.15	1.02	4	6.50	5.91	11.93	9.45	12.60
C601165	CD18-14500	90	B	26.77	14.61	15.35	7.87	12.60	3.54	1.10	4	7.09	6.22	12.99	10.63	13.78
C601166	CD18-17600	95	B	24.76	15.55	15.43	7.87	12.60	3.94	1.10	4	7.56	5.31	13.98	10.63	14.76
C601204	CD18-19700	97	C	33.94	17.17	18.11	4.92	14.96	1.38	1.54	6	8.46	9.06	15.30	12.60	16.30
C601205	CD18-25300	100	C	38.98	17.87	20.87	5.51	17.32	1.50	1.77	6	9.06	9.45	17.64	14.57	18.39
C601271	CD18-32000	100	C	38.98	17.87	20.87	5.51	17.32	1.50	1.77	6	9.06	9.45	17.64	14.57	18.39



Type A



Type B



Type C

Electric Vibrators • Series CD12

Mechanical & Electrical Features

SPEED	
RPM	HZ
1000	50
1200	60

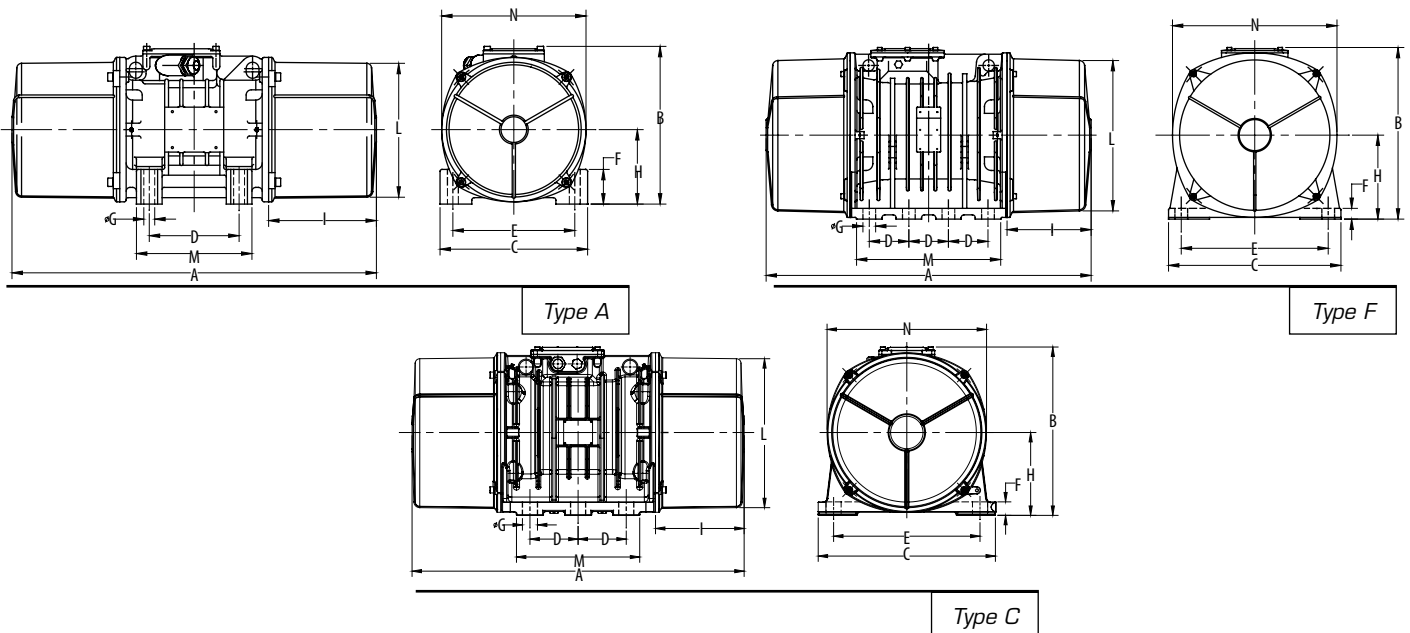
For 230 volt, 60 Hz amperage
double the 460 volt amperage.

Part Number	Model	Frame Size	MECHANICAL FEATURES						ELECTRICAL FEATURES			
			Unbalance <i>in-lbs</i>		Centrifugal Force <i>lbs</i>		Weight <i>lbs</i>		Power Output <i>Horsepower</i>		Max. Current <i>Amps</i>	
			50 Hz	60 Hz	50 Hz	60 Hz	50 Hz	60 Hz	50 Hz	60 Hz	50 Hz / 380 V	60 Hz / 460 V
C602296	CD12-110	10	3	3	77	108	21	21	0.07	0.12	0.3	0.3
C602297	CD12-300	10	7	7	209	301	23	23	0.07	0.12	0.3	0.3
C602298	CD12-580	20	14	14	403	582	37	34	0.13	0.16	0.5	0.5
C602314	CD12-760	30	25	18	708	745	52	49	0.30	0.36	0.7	0.7
C602150	CD12-1630	35	40	40	1127	1623	80	80	0.32	0.36	0.8	0.7
C602161	CD12-1990	40	63	49	1781	1993	105	96	0.60	0.69	1.4	1.4
C602162	CD12-2530	50	88	62	2493	2535	148	131	0.73	0.75	1.7	1.5
C602228	CD12-3100	50	111	80	3139	3208	171	156	0.87	0.87	2.1	2.0
C602165	CD12-3410	60	127	83	3609	3413	207	183	1.1	1.3	2.2	2.2
C602229	CD12-4700	60	167	114	4750	4677	232	205	1.4	1.6	3.0	2.9
C602167	CD12-6050	70	202	148	5732	6054	287	256	2.1	2.3	4.1	3.8
C602230	CD12-6600	70	234	168	6615	6873	319	286	2.4	2.6	4.5	4.3
C602154	CD12-8450	80	297	207	8435	8446	414	375	2.6	3.1	5.1	5.0
C602204	CD12-10400	80	365	251	10365	10266	449	403	3.5	3.9	6.5	6.0
C602138	CD12-11700	90	404	285	11482	11669	529	478	3.9	4.2	7.0	6.5
C602091	CD12-14400	90	507	352	14390	14394	580	516	4.3	4.7	8.2	8.1
C602092	CD12-17600	95	625	431	17738	17628	695	594	7.5	8.4	12.6	11.3
C602093	CD12-19100	95	673	467	19105	19112	721	624	8.0	9.2	14.0	12.9
C602136	CD12-14500	97	528	345	14992	14125	628	567	---	6.7	10	9.8
C602137	CD12-20100	97	753	492	21374	20100	840	750	8.5	9.0	13.5	12.4
C602227	CD12-29000	97	1000	708	28371	28952	926	842	---	---	17.0	16.0
C602134	CD12-26500	100	954	655	27101	26766	1102	979	10.0	11.0	16.3	15.0
C602142	CD12-31000	105	1099	755	31206	30874	1418	1334	12.1	13.5	19.0	18.0
C602143	CD12-37000	105	1345	906	38199	37046	1554	1446	14.8	15.4	24.5	23.0
C602144	CD12-45000	110	1738	1089	49361	44549	2041	1975	19.6	19.6	33.0	25.5
C602273	CD12-55000	110	2112	1354	55127	54780	2117	2050	20.6	20.4	33.0	25.5
C602336	CD12-66000	120	2368	1628	67383	66599	2425	2315	30.0	30.0	---	---

Overall Dimensions (inches)



P/N	Model	Frame Size	Type	A	B	C	D	E	F	Foot Holes		H	I	L	M	N
										ØG	No.					
C602296	CD12-110	10	A	10.00	7.04	5.98	3.54	4.92	1.10	0.51	4	2.87	2.10	5.00	5.03	5.55
C602297	CD12-300	10	A	11.83	7.05	5.98	3.54	4.92	1.10	0.51	4	2.87	3.03	5.00	5.04	5.55
C602298	CD12-580	20	A	13.54	7.99	6.57	4.13	5.51	1.18	0.51	4	3.25	3.65	5.71	5.51	6.30
C602314	CD12-760	30	A	15.51	8.50	8.07	4.72	6.69	1.77	0.67	4	3.68	4.17	6.67	6.30	7.16
C602150	CD12-1630	35	A	17.13	9.17	8.07	4.72	6.69	2.13	0.67	4	4.11	4.63	7.36	6.38	7.99
C602161	CD12-1990	40	A	17.64-19.69	9.69	9.06	5.51	7.48	2.13	0.67	4	4.57	4.25-5.28	8.27	7.09	8.86
C602162	CD12-2530	50	A	19.69-22.36	9.69	9.06	5.51	7.48	2.13	0.67	4	4.57	5.28-6.61	8.27	7.09	8.86
C602228	CD12-3100	50	A	22.36	9.69	9.06	5.51	7.48	2.13	0.67	4	4.57	6.61	8.27	7.09	8.86
C602165	CD12-3410	60	A	21.14-24.29	10.94	10.83	6.10	8.86	2.76	0.87	4	5.31	5.39-6.97	9.37	8.07	9.96
C602229	CD12-4700	60	A	24.29	10.94	10.83	6.10	8.86	2.76	0.87	4	5.31	6.97	9.37	8.07	9.96
C602167	CD12-6050	70	A	26.22	12.64	12.20	6.10	10.04	3.03	0.93	4	6.18	7.01	10.91	8.46	11.61
C602230	CD12-6600	70	A	27.80	12.64	12.20	6.10	10.04	3.03	0.93	4	6.18	7.80	10.91	8.46	11.61
C602154	CD12-8450	80	A	28.98	13.66	13.39	7.09	11.02	3.15	1.02	4	6.50	7.95	11.93	9.45	12.60
C602204	CD12-10400	80	A	31.34	13.66	13.39	7.09	11.02	3.15	1.02	4	6.50	9.17	11.93	9.45	12.60
C602138	CD12-11700	90	A	29.29	14.61	15.35	7.87	12.60	3.54	1.10	4	7.09	7.56	12.99	10.63	13.78
C602091	CD12-14400	90	A	33.07	14.61	15.35	7.87	12.60	3.54	1.10	4	7.09	9.45	12.99	10.63	13.78
C602092	CD12-17600	95	A	34.25	15.55	15.43	7.87	12.60	3.94	1.10	4	7.56	10.04	13.98	10.63	14.76
C602093	CD12-19100	95	A	34.25	15.55	15.43	7.87	12.60	3.94	1.10	4	7.56	10.04	13.98	10.63	14.76
C602136	CD12-14500	97	C	29.53	17.20	18.11	4.92	14.96	1.38	1.54	6	8.46	6.85	16.17	12.60	16.30
C602137	CD12-20100	97	C	33.94	17.20	18.11	4.92	14.96	1.38	1.54	6	8.46	9.06	15.24	12.60	16.30
C602227	CD12-29000	97	C	39.45	17.20	18.11	4.92	14.96	1.38	1.54	6	8.46	11.81	15.24	12.60	16.30
C602134	CD12-26500	100	C	38.98	17.87	20.87	5.51	17.32	1.50	1.77	6	9.06	9.45	16.54	14.57	17.64
C602142	CD12-31000	105	F	37.80	20.71	22.44	5.51	18.90	1.61	1.77	8	10.55	7.87	19.49	20.08	20.31
C602143	CD12-37000	105	F	40.94	20.71	22.44	5.51	18.90	1.61	1.77	8	10.55	9.45	19.49	20.08	20.31
C602144	CD12-45000	110	F	45.28	23.90	24.02	5.51	20.47	1.50	1.77	8	11.69	11.71	21.34	21.85	22.91
C602273	CD12-55000	110	F	45.28	23.90	24.02	5.51	20.47	1.50	1.77	8	11.69	11.71	21.34	21.85	22.91
C602336	CD12-66000	120	F	47.44	25.51	27.56	5.51	23.62	1.77	1.77	8	12.60	12.20	---	---	25.98



Electric Vibrators • Series CD9

Mechanical & Electrical Features

SPEED	
RPM	HZ
750	50
900	60

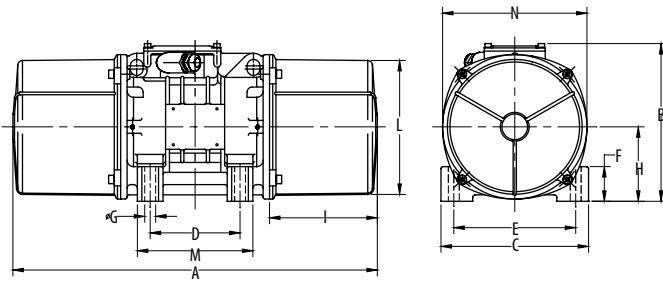
For 230 volt, 60 Hz amperage
double the 460 volt amperage.

Part Number	Model	Frame Size	MECHANICAL FEATURES						ELECTRICAL FEATURES			
			Unbalance <i>in-lbs</i>		Centrifugal Force <i>lbs</i>		Weight <i>lbs</i>		Power Output <i>Horsepower</i>		Max. Current <i>Amps</i>	
			50 Hz	60 Hz	50 Hz	60 Hz	50 Hz	60 Hz	50 Hz	60 Hz	50 Hz / 380 V	60 Hz / 460 V
C602568	CD9-340	20	14	14	299	328	37	37	0.15	0.17	0.9	0.8
C602575	CD9-590	30	25	25	399	573	52	52	0.25	0.28	1.1	1.1
C602865	CD9-910	35	40	40	635	913	80	80	0.19	0.20	0.6	0.7
C602888	CD9-1440	40	63	63	1003	1444	105	105	0.31	0.35	1.2	1.2
C602889	CD9-2020	50	88	88	1402	2019	148	148	0.32	0.40	1.4	1.3
C602890	CD9-2920	60	127	127	2030	2923	203	203	0.9	1.1	2.2	2.2
C602550	CD9-3850	60	167	167	2675	3841	231	231	1.0	1.2	2.6	2.6
C602891	CD9-4640	70	203	203	3223	4643	287	287	1.5	1.8	4.1	4.2
C602884	CD9-6830	80	297	297	4744	6832	414	414	2.0	2.0	5.4	5.2
C602515	CD9-8400	80	365	365	5832	8380	449	449	2.5	2.9	6.0	6.0
C602862	CD9-9310	90	404	404	6471	9343	525	525	2.7	3.2	6.5	6.5
C602826	CD9-11700	90	507	507	8095	11656	580	580	4.0	4.3	8.2	7.9
C602827	CD9-14400	95	625	625	9978	14368	705	705	4.9	5.8	9.9	9.5
C602828	CD9-15500	95	---	647	---	15498	---	728	---	5.8	---	9.5
C602551	CD9-14500	97	637	637	10178	14657	728	728	6.0	6.0	10.5	10.0
C602870	CD9-21900	97	1075	952	17176	21905	966	924	7.1	8.5	13.2	12.0
C602863	CD9-24800	100	1199	1077	19154	24767	1190	1146	7.6	8.7	14.0	13.5
C602871	CD9-31000	105	1558	1345	24877	30942	1548	1499	10.2	10.9	21.0	19.5
C602872	CD9-38000	105	1852	1655	29579	38056	1664	1567	11.9	12.7	22.0	20.0
C602873	CD9-49000	110	2485	2127	39692	48923	2238	2163	14.8	17.4	26.5	28.0
C602535	CD9-57000	110	---	2485	---	57039	---	2233	14.8	17.4	26.5	28.0
C602589	CD9-66000	120	2903	2903	46453	67099	2480	2560	25.0	25.0	---	---

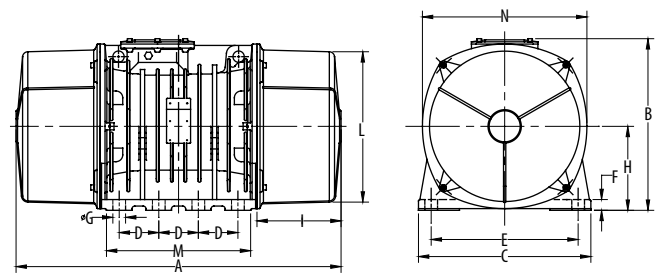
Overall Dimensions (inches)



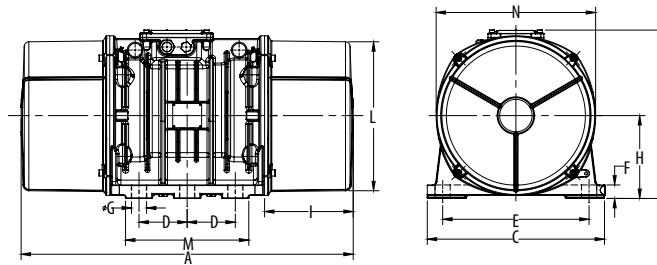
P/N	Model	Frame Size	Type	A	B	C	D	E	F	Foot Holes		H	I	L	M	N
										ØG	No.					
C602568	CD9-340	20	A	13.54	7.99	6.57	4.13	5.51	1.18	0.51	4	3.25	3.68	5.71	5.51	6.30
C602575	CD9-590	30	A	15.51	8.50	8.07	4.72	6.69	1.77	0.67	4	3.68	4.17	6.69	6.30	7.16
C602865	CD9-910	35	A	17.13	9.17	8.07	4.72	6.69	2.13	0.67	4	4.11	4.63	7.36	6.38	7.99
C602888	CD9-1440	40	A	19.69	9.69	9.06	5.51	7.48	2.13	0.67	4	4.57	5.28	8.27	7.09	8.86
C602889	CD9-2020	50	A	22.36	9.69	9.06	5.51	7.48	2.13	0.67	4	4.57	6.61	8.27	7.09	8.86
C602890	CD9-2920	60	A	24.29	10.94	10.83	6.10	8.86	2.76	0.87	4	5.31	6.97	9.37	8.07	9.96
C602550	CD9-3850	60	A	24.29	10.94	10.83	6.10	8.86	2.76	0.87	4	5.31	6.97	9.37	8.07	9.96
C602891	CD9-4640	70	A	26.22	12.64	12.20	6.10	10.04	3.03	0.93	4	6.18	7.01	10.91	8.46	11.61
C602884	CD9-6830	80	A	28.90	13.66	13.39	7.09	11.02	3.15	1.02	4	6.50	7.95	11.93	9.45	12.60
C602515	CD9-8400	80	A	31.34	13.66	13.39	7.09	11.02	3.15	1.02	4	6.50	9.17	11.93	9.45	12.60
C602862	CD9-9310	90	A	29.29	14.61	15.35	7.87	12.60	3.54	1.10	4	7.09	7.56	12.99	10.63	13.78
C602826	CD9-11700	90	A	33.07	14.61	15.35	7.87	12.60	3.54	1.10	4	7.09	9.45	12.99	10.63	13.78
C602827	CD9-14400	95	A	34.25	15.55	15.43	7.87	12.60	3.94	1.10	4	7.56	10.04	13.98	10.63	14.76
C602828	CD9-15500	95	A	34.25	15.55	15.43	7.87	12.60	3.94	1.10	4	7.56	10.04	13.98	10.63	14.76
C602551	CD9-14500	97	C	33.94	17.17	18.11	4.92	14.96	1.38	1.54	6	8.46	9.06	15.24	12.60	16.30
C602870	CD9-21900	97	C	39.45	17.17	18.11	4.92	14.96	1.38	1.54	6	8.46	11.81	15.24	12.60	16.30
C602863	CD9-24800	100	C	42.13	17.87	20.87	5.51	17.32	1.50	1.77	6	9.06	11.02	16.54	14.57	17.64
C602871	CD9-31000	105	F	40.94	20.71	22.44	5.51	18.90	1.61	1.77	8	10.55	9.45	19.49	20.08	20.31
C602872	CD9-38000	105	F	44.09	20.71	22.44	5.51	18.90	1.61	1.77	8	10.55	11.02	19.49	20.08	20.31
C602873	CD9-49000	110	F	45.28	23.90	24.02	5.51	20.47	1.50	1.77	8	11.69	11.71	21.34	21.85	22.91
C602535	CD9-57000	110	F	45.28	23.90	24.02	5.51	20.47	1.50	1.77	8	11.69	11.71	21.34	21.85	22.91
C602589	CD9-66000	120	F	47.44	25.51	27.56	5.51	23.62	1.77	1.77	8	12.60	12.20	---	---	25.98



Type A



Type F



Type C

Single Phase Electric Vibrators • Series CDS36

Mechanical & Electrical Features

SPEED	
RPM	HZ
3000	50
3600	60



Part Number	Model	Frame Size	MECHANICAL FEATURES						ELECTRICAL FEATURES			
			Unbalance <i>in-lbs</i>		Centrifugal Force <i>lbs</i>		Weight <i>lbs</i>		Power Output <i>Horsepower</i>		Max. Current <i>Amps</i>	
			50 Hz	60 Hz	50 Hz	60 Hz	50 Hz	60 Hz	50 Hz	60 Hz	50 Hz / 380 V	60 Hz / 460 V
A600311	CDS36-380	00	1.00	1.00	269	385	9.04	9.04	0.14	0.14	0.75	1.5
A600312	CDS36-480	01	1.82	1.30	467	482	10.91	10.14	0.14	0.14	0.75	1.5
A600313	CDS36-660	10	2.61	1.77	670	653	18	17	0.27	0.27	1.3	2.4
A600314	CDS36-1050	20	4.33	2.81	1109	1038	27	26	0.48	0.47	2.3	4.5
A600381	CDS36-1680	30	6.77	4.51	1730	1662	37	35	0.68	0.68	3.3	7.0

Single Phase Electric Vibrators • Series CDS18

Mechanical & Electrical Features

SPEED	
RPM	HZ
1500	50
1800	60



Part Number	Model	Frame Size	MECHANICAL FEATURES						ELECTRICAL FEATURES			
			Unbalance <i>in-lbs</i>		Centrifugal Force <i>lbs</i>		Weight <i>lbs</i>		Power Output <i>Horsepower</i>		Max. Current <i>Amps</i>	
			50 Hz	60 Hz	50 Hz	60 Hz	50 Hz	60 Hz	50 Hz	60 Hz	50 Hz / 380 V	60 Hz / 460 V
A601340	CDS18-100	00	1.00	1.00	68	97	10	10	0.05	0.05	0.43	1.0
A601341	CDS18-180	01	2.69	1.80	174	169	12	11	0.05	0.05	0.43	1.0
A601367	CDS18-480	10	7.31	5.10	470	471	23	22	0.13	0.15	1.0	2.0
A601372	CDS18-920	20	14	10	908	904	37	34	0.29	0.24	1.2	2.8
A601373	CDS18-1310	20	19	14	1217	1305	42	39	0.29	0.24	1.2	2.8
A601408	CDS18-1690	30	25	18	1587	1675	52	49	0.51	0.40	2.15	5.2

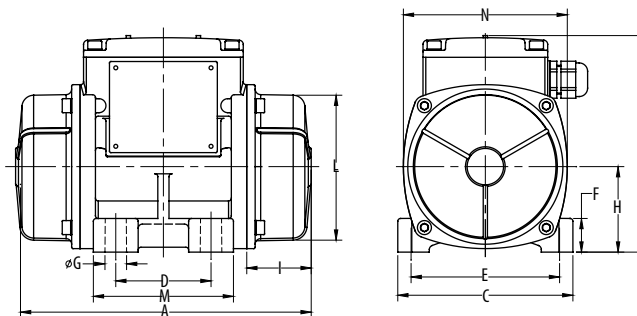
Single Phase Electric Vibrators

Overall Dimensions (inches)

P/N	Model	Frame Size	Type	A	B	C	D	E	F	Foot Holes		H	I	L	M	N
										ØG	No.					
A600311	CDS36-380	00	A	8.31	6.02	4.92	2.44 - 2.91	4.17	0.95	0.35	4	2.40	1.83	4.06	3.94	4.61
A600312	CDS36-480	01	A	9.25	6.02	4.92	2.44 - 2.91	4.17	0.95	0.35	4	2.40	2.30	4.06	3.94	4.61
A600313	CDS36-660	10	A	10.04	7.05	5.98	3.54	4.92	1.10	0.51	4	2.87	2.13	5.00	5.04	5.55
A600314	CDS36-1050	20	A	11.34	7.99	6.57	4.13	5.51	1.18	0.51	4	3.25	2.56	5.71	5.51	6.30
A600381	CDS36-1680	30	A	12.09	8.27	8.07	4.72	6.69	1.77	0.67	4	3.60	2.00	6.61	6.30	7.00

Overall Dimensions (inches)

P/N	Model	Frame Size	Type	A	B	C	D	E	F	Foot Holes		H	I	L	M	N
										ØG	No.					
A601340	CDS18-100	00	A	8.27	5.55	4.92	2.44 - 2.91	4.17	0.59	0.35	4	2.17	1.57	3.54	4.02	4.02
A601341	CDS18-180	01	A	8.66	5.94	4.92	2.44 - 2.91	4.17	0.94	0.35	4	2.52	1.77	4.41	4.02	4.69
A601367	CDS18-480	10	A	11.83	7.05	5.98	3.54	4.92	1.10	0.51	4	2.87	3.03	5.00	5.04	5.55
A601372	CDS18-920	20	A	13.54	7.99	6.57	4.13	5.51	1.18	0.51	4	3.25	3.68	5.71	5.51	6.30
A601373	CDS18-1310	20	A	15.20	7.99	6.57	4.13	5.51	1.18	0.51	4	3.25	3.68	5.71	5.51	6.30
A601408	CDS18-1690	30	A	15.51	8.50	8.07	4.72	6.69	1.77	0.67	4	3.68	4.17	6.69	6.30	7.16



Type A

Micro Single Phase Series

Mechanical & Electrical Features



Part Number	Model	MECHANICAL FEATURES						ELECTRICAL FEATURES				
		Frame Size	Speed <i>rpm</i>		Centrifugal Force <i>lbs</i>		Weight <i>lbs</i>		Power Output <i>Horsepower</i>		Max. Current <i>Amps</i>	
			50 Hz	60 Hz	50 Hz	60 Hz	50 Hz	60 Hz	50 Hz	60 Hz	50 Hz / 380 V	60 Hz / 460 V
A600448	M-16	Micro	3000	3600	9	13	2.0	2.0	0.03	0.03	0.13	0.30
A600475	M-60	Micro	3000	3600	44	64	4.3	4.3	0.05	0.05	0.17	0.42
A600476	M-140	Micro	3000	3600	99	143	4.9	4.9	0.06	0.06	0.20	0.46
A600223	M-190	Micro	3000	3600	137	194	9.0	9.0	0.09	0.09	1.25	1.10

Micro Three Phase Series

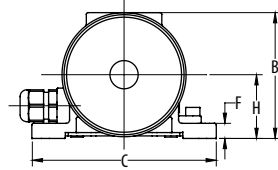
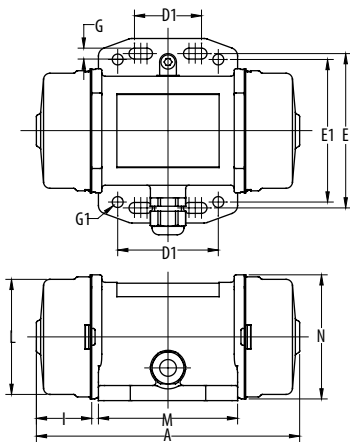
Mechanical & Electrical Features



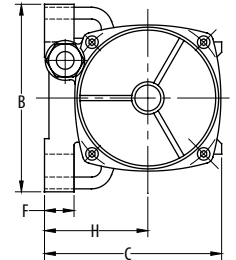
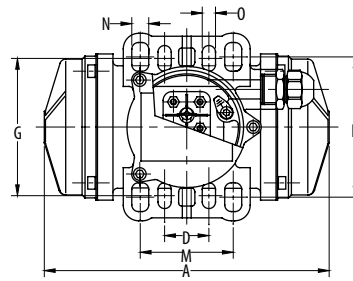
Part Number	Model	MECHANICAL FEATURES						ELECTRICAL FEATURES				
		Frame Size	Speed <i>rpm</i>		Centrifugal Force <i>lbs</i>		Weight <i>lbs</i>		Power Output <i>Horsepower</i>		Max. Current <i>Amps</i>	
			50 Hz	60 Hz	50 Hz	60 Hz	50 Hz	60 Hz	50 Hz	60 Hz	50 Hz / 380 V	60 Hz / 460 V
C600449	M-60	Micro	3000	3600	44	64	4.3	4.3	0.03	0.03	0.15	0.15
C600450	M-140	Micro	3000	3600	99	143	4.9	4.9	0.06	0.06	0.16	0.16
C600223	M-190	Micro	3000	3600	137	194	9.0	9.0	0.16	0.16	0.23	0.27

Overall Dimensions (inches)

Model	Frame Size	Type	A	B	C	D	D1	E	E1	F	G	G1	No.	H	I	L	M	N	O
M-16	Micro	N	4.45	2.62	3.54	0.98-1.57	---	2.95	---	0.35	0.22	---	4	1.34	0.98	2.23	2.32	2.40	---
M-60	Micro	N	6.06	2.93	4.33	0.98-1.58	2.36	3.62	3.35	0.35	0.26	∅ 0.26	8	1.50	1.08	2.70	3.27	2.87	---
M-140	Micro	N	6.65	2.93	4.33	0.98-1.59	2.36	3.62	3.35	0.35	0.26	∅ 0.26	8	1.50	1.38	2.70	3.27	2.87	---
M-190	Micro	M	7.60	5.00	4.72	1.18	---	3.74	---	0.79	3.66	---	---	2.76	---	---	2.48	0.45	0.35



Type N



Type M

Explosion-Proof Electric Vibrators • Series CDX36

Mechanical & Electrical Features

SPEED	
RPM	HZ
3000	50
3600	60

For 230 volt, 60 Hz amperage
double the 460 volt amperage.
+-also available in single phase.

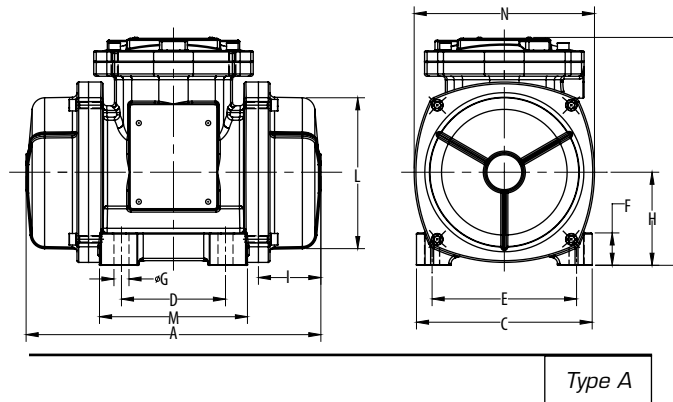
Part Number	Model	Frame Size	MECHANICAL FEATURES						ELECTRICAL FEATURES			
			Unbalance <i>in-lbs</i>		Centrifugal Force <i>lbs</i>		Weight <i>lbs</i>		Power Output <i>Horsepower</i>		Max. Current <i>Amps</i>	
			50 Hz	60 Hz	50 Hz	60 Hz	50 Hz	60 Hz	50 Hz	60 Hz	50 Hz / 380 V	60 Hz / 460 V
C600384	CDX36-650+	10	2.61	1.77	670	653	26	25	0.24	0.25	0.6	0.50
C600385	CDX36-1040+	20	4.33	2.81	1109	1038	37	36	0.45	0.52	0.8	0.75
C600387	CDX36-1660+	30	6.77	4.51	1730	1662	52	50	0.67	0.70	1.1	1.0
C600389	CDX36-2530	35	9.5	6.3	2436	2339	75	73	0.64	0.75	0.9	0.93
C600437	CDX36-3530	40	14	9.6	3583	3532	124	118	1.14	1.24	1.7	1.7
C600317	CDX36-4600	50	18	13	4661	4586	137	134	1.2	1.5	1.8	1.9
C600320	CDX36-5060	60	20	14	4930	5071	182	176	2.2	2.5	3.2	3.2
C600323	CDX36-7040	70	30	19	7622	6862	238	229	3.4	3.4	5.2	5.0
C600486	CDX36-10500	80	41	29	10385	10496	317	306	4.9	4.9	7.1	6.6

Explosion-Proof Electric Vibrators

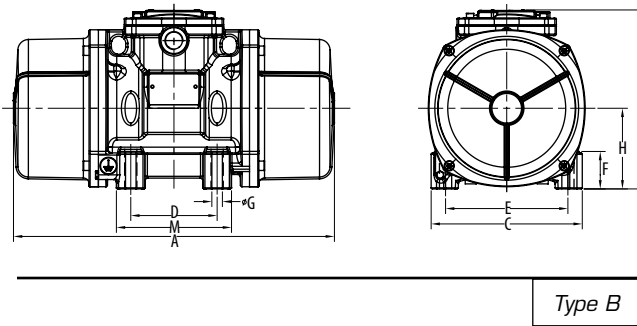
Overall Dimensions (inches)



P/N	Model	Frame Size	Type	A	B	C	D	E	F	Foot Holes		H	I	L	M	N
										ØG	No.					
C600384	CDX36-650	10	A	10.03	7.76	5.98	3.54	4.92	1.10	0.51	4	3.17	2.13	5.12	5.04	6.14
C600385	CDX36-1040	20	A	11.34	8.58	6.57	4.13	5.51	1.18	0.51	4	3.54	2.56	5.91	5.51	6.89
C600387	CDX36-1660	30	A	12.36	9.07	8.07	4.72	6.69	1.77	0.67	4	4.02	2.60	6.97	6.38	7.87
C600389	CDX36-2530	35	B	14.17	9.78	8.27	4.72	6.69	2.05	0.67	4	4.41	2.95	7.56	6.30	8.58
C600437	CDX36-3530	40	B	18.43	10.96	9.25	5.51	7.48	2.56	0.67	4	4.57	4.25	8.27	7.28	8.86
C600317	CDX36-4600	50	B	20.47	10.96	9.25	5.51	7.48	2.56	0.87	4	4.57	5.28	8.27	7.28	8.86
C600320	CDX36-5060	60	B	22.52	12.28	10.63	6.10	8.86	2.05	0.87	4	5.31	5.75	9.39	7.87	9.96
C600323	CDX36-7040	70	B	23.39	13.50	12.20	6.10	10.04	2.56	0.93	4	6.10	5.39	10.98	8.27	11.61
C600217	CDX36-10500	80	B	29.76	14.96	13.19	7.09	11.02	2.76	1.02	4	6.81	6.81	11.97	9.25	13.19



Type A



Type B

Explosion-Proof Electric Vibrators • Series CDX18

Mechanical & Electrical Features

SPEED	
RPM	HZ
1500	50
1800	60

For 230 volt, 60 Hz amperage
double the 460 volt amperage.
+-also available in single phase.

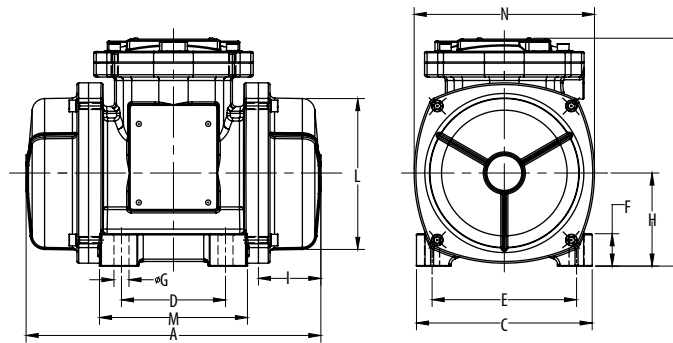
Part Number	Model	Frame Size	MECHANICAL FEATURES						ELECTRICAL FEATURES			
			Unbalance <i>in-lbs</i>		Centrifugal Force <i>lbs</i>		Weight <i>lbs</i>		Power Output <i>Horsepower</i>		Max. Current <i>Amps</i>	
			50 Hz	60 Hz	50 Hz	60 Hz	50 Hz	60 Hz	50 Hz	60 Hz	50 Hz / 380 V	60 Hz / 460 V
C601409	CDX18-470+	10	7.31	5.1	470	471	31	29	0.13	0.13	0.4	0.4
C601410	CDX18-910+	20	14	10	908	904	48	44	0.29	0.37	0.6	0.6
C601411	CDX18-1300+	20	19	14	1217	1305	52	49	0.29	0.37	0.6	0.6
C601412	CDX18-1670	30	25	18	1587	1675	67	64	0.51	0.66	0.9	1.0
C601413	CDX18-2150	35	36	24	2303	2165	101	92	0.6	0.6	0.81	0.88
C601424	CDX18-3190	40	49	35	3115	3195	145	135	0.73	1.0	1.35	1.50
C601358	CDX18-4400-D	50	71	49	4533	4485	166	152	1.2	1.5	1.9	1.9
C601329	CDX18-5380-D	60	83	59	5333	5386	211	200	1.7	2.0	3.0	2.8
C601330	CDX18-8300-D	70	132	90	8464	8252	279	268	2.5	2.5	3.8	3.5
C601487	CDX18-10900-D	80	173	118	11036	10891	368	353	2.8	2.8	4.7	4.4

Explosion-Proof Electric Vibrators

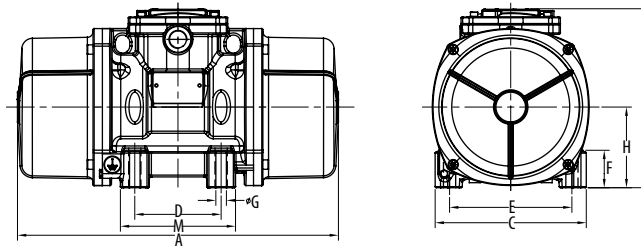
Overall Dimensions (inches)



P/N	Model	Frame Size	Type	A	B	C	D	E	F	Foot Holes		H	I	L	M	N
										ØG	No.					
C601409	CDX18-470	10	A	11.85	7.76	5.98	3.54	4.92	1.10	0.51	4	3.17	3.03	5.12	5.04	6.14
C601410	CDX18-910	20	A	13.78	8.58	6.57	4.13	5.51	1.18	0.51	4	3.54	3.78	5.91	5.51	6.89
C601411	CDX18-1300	20	A	15.43	8.58	6.57	4.13	5.51	1.18	0.51	4	3.54	4.61	5.91	5.51	6.89
C601412	CDX18-1670	30	A	15.51	9.07	8.07	4.72	6.69	1.77	0.67	4	4.02	4.17	6.97	6.38	7.87
C601413	CDX18-2150	35	B	15.51	9.07	8.07	4.72	6.69	1.77	0.67	4	4.02	4.17	6.97	6.38	7.87
C601424	CDX18-3190	40	B	18.43	10.96	9.25	5.51	7.48	2.56	0.67	4	4.57	4.25	8.27	7.28	8.86
C601358	CDX18-4400-D	50	B	20.47	10.96	9.25	5.51	7.48	2.56	0.87	4	4.57	5.28	8.27	7.28	8.86
C601329	CDX18-5380-D	60	B	22.52	12.28	10.63	6.10	8.86	2.05	0.87	4	5.31	5.75	9.39	7.87	9.96
C601330	CDX18-8300-D	70	B	23.39	13.50	12.20	6.10	10.04	2.56	0.93	4	6.10	5.39	10.98	8.27	11.61
C601487	CDX18-10900	80	B	29.76	14.96	13.19	7.09	11.02	2.76	1.02	4	6.81	6.81	11.97	9.25	13.19



Type A



Type B

Explosion-Proof Electric Vibrators • Series CDX12

Mechanical & Electrical Features

SPEED	
RPM	HZ
1000	50
1200	60

For 230 volt, 60 Hz amperage
double the 460 volt amperage.

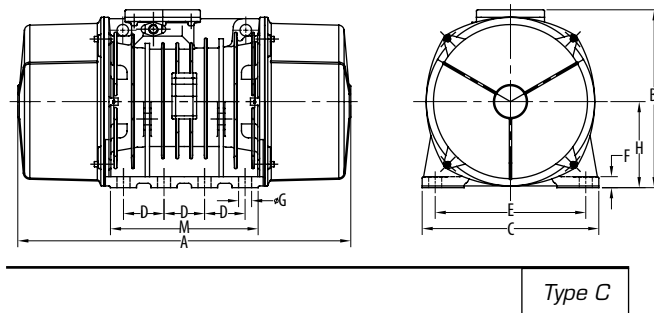
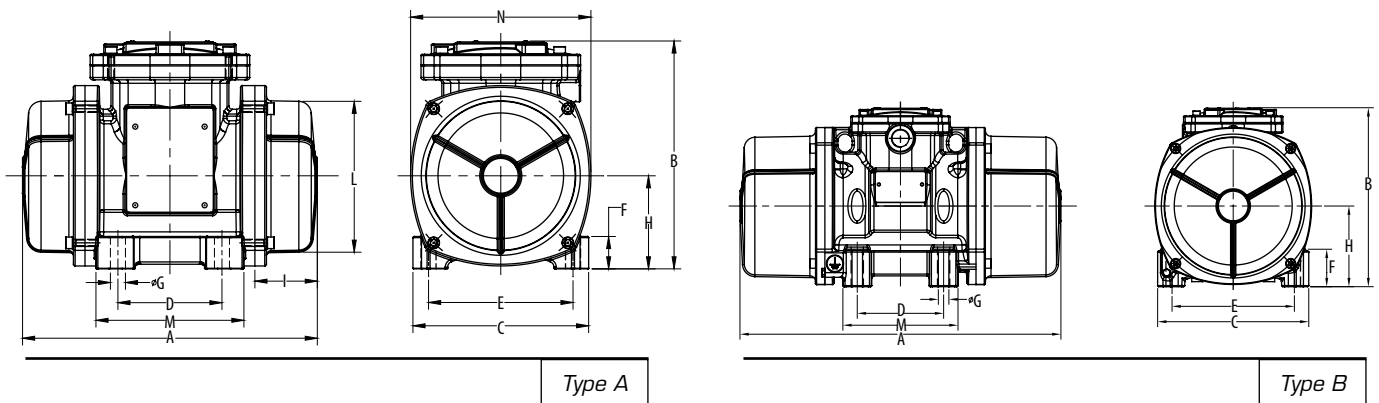
Part Number	Model	Frame Size	MECHANICAL FEATURES						ELECTRICAL FEATURES			
			Unbalance <i>in-lbs</i>		Centrifugal Force <i>lbs</i>		Weight <i>lbs</i>		Power Output <i>Horsepower</i>		Max. Current <i>Amps</i>	
			50 Hz	60 Hz	50 Hz	60 Hz	50 Hz	60 Hz	50 Hz	60 Hz	50 Hz / 380 V	60 Hz / 460 V
C602316	CDX12-220	10	7	7	209	301	31	31	0.07	0.12	0.3	0.3
C602317	CDX12-575	20	14	14	403	582	49	49	0.13	0.16	0.5	0.5
C602318	CDX12-750	30	25	18	708	745	67	64	0.30	0.36	0.72	0.68
C602320	CDX12-1630	35	40	40	1127	1623	105	105	0.30	0.30	0.57	0.61
C602325	CDX12-1990	40	63	49	1781	1993	156	144	0.50	0.60	1.24	1.30
C602274	CDX12-2530	50	88	62	2493	2535	181	164	0.65	0.73	1.52	1.65
C602277	CDX12-3410	60	127	83	3609	3413	226	215	1.0	1.2	2.1	2.1
C602280	CDX12-6050	70	202	148	5732	6054	283	252	2.0	2.0	3.8	3.7
C602365	CDX12-8450	80	297	207	8435	8444	432	392	2.3	2.5	4.75	4.75
C602201	CDX12-45000	110	1738	1089	49361	44549	2045	1979	15.8	19.7	25.2	25.5

Explosion-Proof Electric Vibrators

Overall Dimensions (inches)



P/N	Model	Frame Size	Type	A	B	C	D	E	F	Foot Holes		H	I	L	M	N
										ØG	No.					
C602316	CDX12-220	10	A	11.85	7.76	5.98	3.54	4.92	1.10	0.51	4	3.17	3.03	5.12	5.04	6.14
C602317	CDX12-575	20	A	13.78	8.58	6.57	4.13	5.51	1.18	0.51	4	3.54	3.78	5.91	5.51	6.89
C602318	CDX12-750	30	A	15.51	9.07	8.07	4.72	6.69	1.77	0.67	4	4.01	4.17	6.97	6.38	7.87
C602320	CDX12-1630	35	B	17.48	9.78	8.27	4.72	6.69	2.05	0.67	4	4.41	4.61	7.56	6.30	8.58
C602320	CDX12-1990	40	B	18.43-20.47	10.96	9.25	5.51	7.48	2.56	0.67	4	4.57	4.25-5.28	8.27	7.28	8.86
C602274	CDX12-2530	50	B	20.47	10.96	9.25	5.51	7.48	2.56	0.87	4	4.57	5.28	8.27	7.28	8.86
C602277	CDX12-3410	60	B	22.52	12.28	10.63	6.10	8.86	2.05	0.87	4	5.31	5.75	9.39	7.87	9.96
C602280	CDX12-6050	70	B	26.61	13.50	12.20	6.10	10.04	2.56	0.93	4	6.10	7.01	10.98	8.27	11.61
C602124	CDX12-8450	80	B	29.76	14.96	13.19	7.09	11.02	2.76	1.02	4	6.89	6.81	11.97	9.25	13.19
C602201	CDX12-45000	110	C	45.28	23.90	24.00	5.51	20.47	1.50	1.77	8	11.69	11.70	21.34	20.10	22.90



Explosion-Proof Electric Vibrators • Series CDX9

Mechanical & Electrical Features

SPEED	
RPM	HZ
750	50
900	60

For 230 volt, 60 Hz amperage
double the 460 volt amperage.

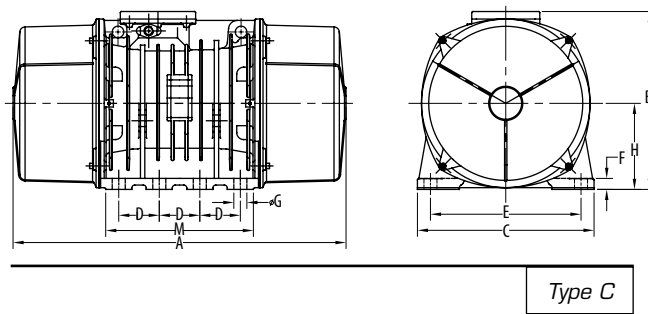
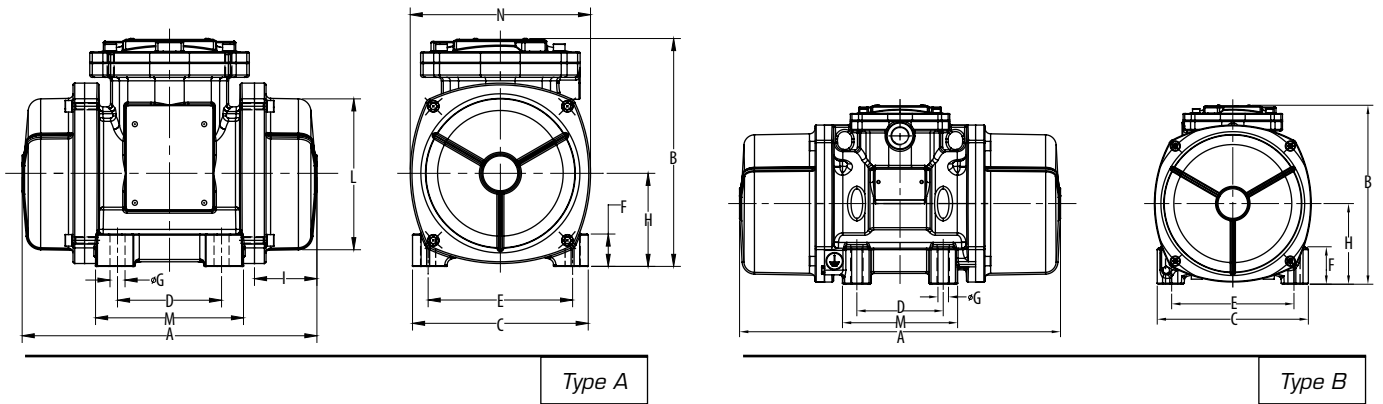
Part Number	Model	Frame Size	MECHANICAL FEATURES						ELECTRICAL FEATURES			
			Unbalance <i>in-lbs</i>		Centrifugal Force <i>lbs</i>		Weight <i>lbs</i>		Power Output <i>Horsepower</i>		Max. Current <i>Amps</i>	
			50 Hz	60 Hz	50 Hz	60 Hz	50 Hz	60 Hz	50 Hz	60 Hz	50 Hz / 380 V	60 Hz / 460 V
C602576	CDX9-330	20	14	14	229	326	49	49	0.15	0.16	0.85	0.76
C602577	CDX9-570	30	25	25	399	573	67	67	0.26	0.28	1.1	1.1
C602578	CDX9-910	35	40	40	635	913	105	105	0.20	0.20	0.57	0.58
C602581	CDX9-1440	40	63	63	1003	1444	156	156	0.25	0.25	0.87	0.90
C602552	CDX9-2020	50	88	88	1402	2019	181	181	0.3	0.35	1.0	1.1
C602555	CDX9-2920	60	127	127	2030	2923	226	226	0.64	0.75	1.52	1.90
C602558	CDX9-4640	70	203	203	3223	4643	320	320	1.4	1.5	3.52	3.45
C602602	CDX9-6830	80	297	297	4744	6832	432	432	2.4	2.85	--	--
C602513	CDX9-49000	110	2485	2127	69692	48923	2238	2163	10.9	13.8	21.4	22.0

Explosion-Proof Electric Vibrators

Overall Dimensions (inches)



P/N	Model	Frame Size	Type	A	B	C	D	E	F	Foot Holes		H	I	L	M	N
										ØG	No.					
C602576	CDX9-330	20	A	13.78	8.58	6.57	4.13	5.51	1.18	0.51	4	3.54	3.78	5.91	5.51	6.89
C602577	CDX9-570	30	A	15.51	9.07	8.07	4.72	6.69	1.77	0.67	4	4.02	4.17	6.97	6.38	7.87
C602578	CDX9-910	35	B	17.48	9.78	8.27	4.72	6.69	2.05	0.67	4	4.41	4.61	7.56	6.30	8.58
C602581	CDX9-1440	40	B	20.47	10.96	9.25	5.51	7.48	2.56	0.67	4	4.57	5.27	8.27	7.28	8.85
C602552	CDX9-2020	50	B	23.39	10.96	9.25	5.51	7.48	2.56	0.87	4	4.57	6.73	8.27	7.28	8.86
C602555	CDX9-2920	60	B	24.96	12.28	10.63	6.10	8.86	2.05	0.87	4	5.31	6.97	9.39	7.87	9.96
C602558	CDX9-4640	70	B	26.61	13.50	12.20	6.10	10.04	2.56	0.93	4	6.10	7.01	10.98	8.27	11.61
C602602	CDX9-6830	80	B	28.90	14.41	13.19	7.09	11.02	2.76	1.02	4	6.89	7.95	11.97	9.25	13.19
C602513	CDX9-49000	110	C	45.27	23.90	24.00	5.51	20.47	1.50	1.77	8	11.70	11.70	21.35	20.10	22.91



Stainless Steel Electric Vibrators • Series ST36

Mechanical & Electrical Features

SPEED	
RPM	HZ
3000	50
3600	60



For 230 volt, 60 Hz amperage
double the 460 volt amperage.

Part Number	Model	Frame Size	MECHANICAL FEATURES						ELECTRICAL FEATURES			
			Unbalance in-lbs		Centrifugal Force lbs		Weight lbs		Power Output Horsepower		Max. Current Amps	
			50 Hz	60 Hz	50 Hz	60 Hz	50 Hz	60 Hz	50 Hz	60 Hz	50 Hz / 380 V	60 Hz / 460 V
C600328	ST36-380	00	1.00	1.00	269	385	13	13	0.17	0.17	0.35	0.30
C600329	ST36-480	01	1.82	1.30	467	482	15	14	0.17	0.17	0.35	0.30
C600330	ST36-660	10	2.61	1.77	670	653	23	22	0.24	0.25	0.60	0.50
C600331	ST36-1050	20	4.33	2.81	1109	1038	35	33	0.45	0.52	0.80	0.75
C600332	ST36-1660	30	6.77	4.51	1730	1662	46	44	0.67	0.70	1.1	1.0
C600333	ST36-2530	35	9.55	6.34	2436	2339	60	57	1.4	1.4	1.75	1.75
C600334	ST36-3280	40	13.28	8.85	3406	3269	87	84	1.5	1.5	2.3	2.0
C600335	ST36-4100	50	18	11	4537	4083	107	102	2.2	2.2	3.5	3.0

Stainless Steel Electric Vibrators • Series ST18

Mechanical & Electrical Features

SPEED	
RPM	HZ
1500	50
1800	60



For 230 volt, 60 Hz amperage
double the 460 volt amperage.

Part Number	Model	Frame Size	MECHANICAL FEATURES						ELECTRICAL FEATURES			
			Unbalance in-lbs		Centrifugal Force lbs		Weight lbs		Power Output Horsepower		Max. Current Amps	
			50 Hz	60 Hz	50 Hz	60 Hz	50 Hz	60 Hz	50 Hz	60 Hz	50 Hz / 380 V	60 Hz / 460 V
C601342	ST18-100	00	1.00	1.00	68	97	13	13	0.05	0.06	0.2	0.2
C601343	ST18-180	01	2.69	1.80	174	169	15	15	0.05	0.06	0.2	0.2
C601344	ST18-480	10	7.31	5.10	470	471	28	26	0.13	0.13	0.4	0.4
C601345	ST18-920	20	14	10	908	904	44	41	0.29	0.37	0.6	0.6
C601346	ST18-1310	20	19	14	1217	1305	49	46	0.29	0.37	0.6	0.6
C601347	ST18-1670	30	25	18	1587	1675	62	59	0.51	0.66	0.9	1.0
C601348	ST18-2150	35	36	24	2302	2163	84	74	0.54	0.67	1.0	1.0
C601349	ST18-3190	40	49	35	3115	3195	117	110	1.0	1.2	1.5	1.5
C601350	ST18-3870	50	62	42	3962	3871	129	120	1.1	1.2	2.0	1.9
C601351	ST18-4500	50	71	49	4533	4485	154	150	1.3	1.5	2.5	2.3

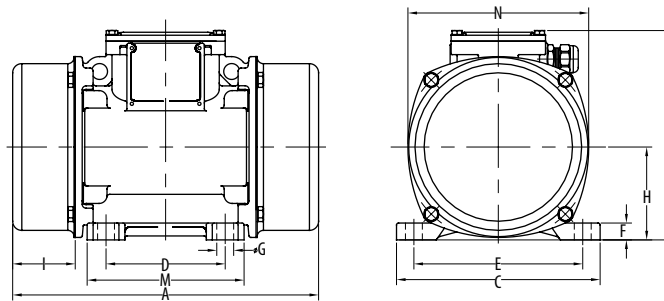
Stainless Steel Electric Vibrators

Overall Dimensions (inches)

P/N	Model	Frame Size	Type	A	B	C	D	E	F	Foot Holes		H	I	L	M	N
										ØG	No.					
C600328	ST36-380	00	A	8.27	5.98	4.92	2.44-2.91	4.17	0.39	0.35	4	2.40	1.77	3.94	4.02	4.61
C600329	ST36-480	01	A	8.82	6.22	4.92	2.44-2.91	4.17	0.39	0.35	4	2.64	2.05	4.37	4.02	5.04
C600330	ST36-660	10	A	10.16	7.00	5.98	3.54	4.92	0.55	0.51	4	2.87	2.20	4.88	4.61	5.55
C600331	ST36-1050	20	A	11.26	7.95	6.57	4.13	5.51	0.59	0.51	4	3.27	2.52	5.59	5.39	6.30
C600332	ST36-1660	30	A	12.24	8.39	8.07	4.72	6.69	0.67	0.67	4	3.70	2.56	6.61	6.30	7.17
C600333	ST36-2530	35	A	14.65	9.17	8.07	4.72	6.69	2.13	0.67	4	4.11	3.39	7.36	6.38	7.99
C600334	ST36-3280	40	A	17.64	9.69	9.06	5.51	7.48	2.13	0.67	4	4.57	4.25	8.27	7.09	8.86
C600335	ST36-4100	50	A	17.64	9.69	9.06	5.51	7.48	2.13	0.67	4	4.57	4.25	8.27	7.09	8.86

Overall Dimensions (inches)

P/N	Model	Frame Size	Type	A	B	C	D	E	F	Foot Holes		H	I	L	M	N
										ØG	No.					
C601342	ST18-100	00	A	8.27	5.98	4.92	2.44-2.91	4.17	0.39	0.35	4	2.40	1.77	3.94	4.02	4.61
C601343	ST18-180	01	A	8.82	6.22	4.92	2.44-2.91	4.17	0.39	0.35	4	2.64	2.05	4.37	4.02	5.04
C601344	ST18-480	10	A	11.73	7.01	5.98	3.54	4.92	0.55	0.51	4	2.87	2.20	4.88	4.61	5.55
C601345	ST18-920	20	A	13.43	7.95	6.57	4.13	5.51	0.59	0.51	4	3.27	2.52	5.59	5.39	6.30
C601346	ST18-1310	20	A	15.00	7.95	6.57	4.13	5.51	0.59	0.51	4	3.27	2.52	5.59	5.39	6.30
C601347	ST18-1670	30	A	14.92	8.39	8.07	4.72	6.69	0.67	0.67	4	3.70	2.56	6.61	6.30	7.17
C601348	ST18-2150	35	A	17.13	9.17	8.07	4.72	6.69	2.13	0.67	4	4.11	4.63	7.36	6.38	7.99
C601349	ST18-3190	40	A	17.64	9.69	9.06	5.51	7.48	2.13	0.67	4	4.57	4.25	8.27	7.09	8.86
C601350	ST18-3870	50	A	19.68	9.69	9.06	5.51	7.48	2.13	0.67	4	4.57	5.28	8.27	7.09	8.86
C601351	ST18-4500	50	A	22.36	9.69	9.06	5.51	7.48	2.13	0.67	4	4.57	6.61	8.27	7.09	8.86



Type A

Stainless Steel Electric Vibrators • Series ST12

Mechanical & Electrical Features

SPEED	
RPM	HZ
1000	50
1200	60



For 230 volt, 60 Hz amperage
double the 460 volt amperage.

Part Number	Model	Frame Size	MECHANICAL FEATURES						ELECTRICAL FEATURES			
			Unbalance in-lbs		Centrifugal Force lbs		Weight lbs		Power Output Horsepower		Max. Current Amps	
			50 Hz	60 Hz	50 Hz	60 Hz	50 Hz	60 Hz	50 Hz	60 Hz	50 Hz / 380 V	60 Hz / 460 V
C602283	ST12-90	10	3	3	77	108	23	22	0.07	0.12	0.3	0.3
C602284	ST12-300	10	7	7	209	301	28	26	0.07	0.12	0.3	0.3
C602285	ST12-580	20	14	14	403	582	44	41	0.13	0.16	0.5	0.5
C602286	ST12-750	30	25	18	708	745	62	59	0.30	0.36	0.7	0.7
C602287	ST12-1630	35	40	40	1127	1623	84	74	0.32	0.36	0.8	0.7
C602288	ST12-1990	40	63	49	1781	1993	119	116	0.60	0.69	1.4	1.4
C602289	ST12-2530	50	88	62	2493	2535	148	131	0.73	0.75	1.7	1.5
C602290	ST12-3100	50	111	80	3139	3208	172	157	0.87	0.87	2.1	2.0
C602291	ST12-3410	60	127	83	3609	3413	207	183	1.1	1.3	2.2	2.2
C602292	ST12-4700	60	167	114	4750	4677	231	205	1.4	1.6	3.0	2.9
C602293	ST12-6050	70	202	148	5732	6054	287	256	2.1	2.3	4.1	3.8
C602294	ST12-6600	70	234	168	6615	6873	320	287	2.4	2.6	4.5	4.3

Stainless Steel Electric Vibrators • Series ST9

Mechanical & Electrical Features

SPEED	
RPM	HZ
750	50
900	60



For 230 volt, 60 Hz amperage
double the 460 volt amperage.

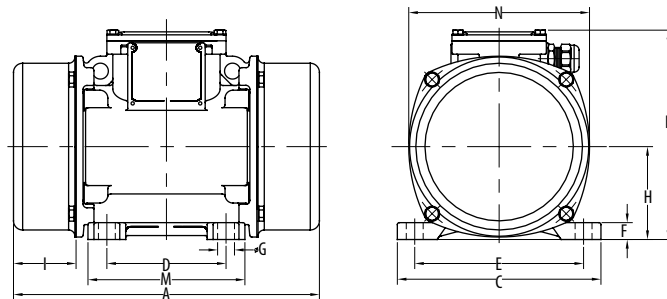
Part Number	Model	Frame Size	MECHANICAL FEATURES						ELECTRICAL FEATURES			
			Unbalance in-lbs		Centrifugal Force lbs		Weight lbs		Power Output Horsepower		Max. Current Amps	
			50 Hz	60 Hz	50 Hz	60 Hz	50 Hz	60 Hz	50 Hz	60 Hz	50 Hz / 380 V	60 Hz / 460 V
C602561	ST9-340	20	14	14	229	328	44	41	0.15	0.17	0.9	0.8
C602562	ST9-570	30	25	25	399	573	62	59	0.25	0.28	1.1	1.1
C602563	ST9-910	35	40	40	635	913	84	74	0.19	0.20	0.6	0.7
C602564	ST9-1440	40	63	63	1003	1444	119	119	0.31	0.35	1.2	1.2
C602565	ST9-2020	50	88	88	1402	2019	148	148	0.32	0.40	1.4	1.3
C602566	ST9-2920	60	127	127	2030	2923	207	207	0.9	1.1	2.2	2.2
C602567	ST9-4640	70	203	203	3223	4643	287	287	1.5	1.8	4.1	4.2

Overall Dimensions (inches)

P/N	Model	Frame Size	Type	A	B	C	D	E	F	Foot Holes		H	I	L	M	N
										ØG	No.					
C602283	ST12-90	10	A	10.16	7.01	5.98	3.54	4.92	0.55	0.51	4	2.87	2.20	4.88	4.61	5.55
C602284	ST12-300	10	A	11.73	7.01	5.98	3.54	4.92	0.55	0.51	4	2.87	2.20	4.88	4.61	5.55
C602285	ST12-580	20	A	13.43	7.95	6.57	4.13	5.51	0.59	0.51	4	3.27	2.52	5.59	5.39	6.30
C602286	ST12-750	30	A	14.92	8.39	8.07	4.72	6.69	0.67	0.67	4	3.70	2.56	6.61	6.30	7.17
C602287	ST12-1630	35	A	17.13	9.17	8.07	4.72	6.69	2.13	0.67	4	4.11	4.63	7.36	6.38	7.99
C602288	ST12-1990	40	A	17.64-21.65	9.69	9.06	5.51	7.48	2.13	0.67	4	4.57	4.63	8.27	7.09	8.86
C602289	ST12-2530	50	A	19.68-22.36	9.69	9.06	5.51	7.48	2.13	0.67	4	4.57	4.63	8.27	7.09	8.86
C602290	ST12-3200	50	A	23.94	9.69	9.06	5.51	7.48	2.13	0.67	4	4.57	7.40	8.27	7.09	8.86
C602291	ST12-3410	60	A	21.14-24.29	10.75	10.94	6.10	8.86	2.83	0.87	4	5.24	4.63	9.37	8.07	9.96
C602292	ST12-4650	60	A	21.14-24.29	10.75	10.94	6.10	8.86	2.83	0.87	4	5.24	4.63	9.37	8.07	9.96
C602293	ST12-6050	70	A	26.22	13.11	12.20	6.10	10.04	3.03	0.93	4	6.18	7.01	10.91	8.46	11.61
C602294	ST12-6900	70	A	27.80	13.11	12.20	6.10	10.04	3.03	0.93	4	6.18	7.80	10.91	8.46	11.61

Overall Dimensions (inches)

P/N	Model	Frame Size	Type	A	B	C	D	E	F	Foot Holes		H	I	L	M	N
										ØG	No.					
C602561	ST9-340	20	A	13.54	7.99	6.57	4.13	5.51	1.18	0.51	4	3.25	3.68	5.71	5.51	6.30
C602562	ST9-570	30	A	14.92	8.39	8.07	4.72	6.69	0.67	0.67	4	3.70	2.56	6.61	6.30	7.17
C602563	ST9-910	35	A	17.13	9.17	8.07	4.72	6.69	2.13	0.67	4	4.11	4.63	7.36	6.38	7.99
C602564	ST9-1440	40	A	19.68	9.69	9.06	5.51	7.48	2.13	0.67	4	4.57	5.28	8.27	7.09	8.86
C602565	ST9-2020	50	A	22.36	9.69	9.06	5.51	7.48	2.13	0.67	4	4.57	6.61	8.27	7.09	8.86
C602566	ST9-2920	60	A	24.29	10.75	10.94	6.10	8.86	2.83	0.87	4	5.24	6.97	9.37	8.07	9.96
C602567	ST9-4640	70	A	26.22	13.11	12.20	6.10	10.04	3.03	0.93	4	6.18	7.01	11.02	8.46	11.61



Type A

Stainless Steel Electric Vibrators • Series STS36

Mechanical & Electrical Features

SPEED	
RPM	HZ
3000	50
3600	60



Part Number	Model	Frame Size	MECHANICAL FEATURES						ELECTRICAL FEATURES			
			Unbalance <i>in-lbs</i>		Centrifugal Force <i>lbs</i>		Weight <i>lbs</i>		Power Output <i>Horsepower</i>		Max. Current <i>Amps</i>	
			50 Hz	60 Hz	50 Hz	60 Hz	50 Hz	60 Hz	50 Hz	60 Hz	50 Hz / 380 V	60 Hz / 460 V
A600328	STS36-380	00	1.00	1.00	269	385	13	13	0.14	0.14	0.75	1.5
A600329	STS36-480	01	1.82	1.30	467	482	15	14	0.14	0.14	0.75	1.5
A600330	STS36-660	10	2.61	1.77	670	653	23	22	0.27	0.27	1.3	2.4
A600331	STS36-1050	20	4.33	2.81	1109	1038	35	33	0.48	0.47	2.3	4.5
A600332	STS36-1680	30	6.77	4.51	1730	1662	46	44	0.68	0.68	3.3	7.0

Stainless Steel Electric Vibrators • Series STS18

Mechanical & Electrical Features

SPEED	
RPM	HZ
1500	50
1800	60



Part Number	Model	Frame Size	MECHANICAL FEATURES						ELECTRICAL FEATURES			
			Unbalance <i>in-lbs</i>		Centrifugal Force <i>lbs</i>		Weight <i>lbs</i>		Power Output <i>Horsepower</i>		Max. Current <i>Amps</i>	
			50 Hz	60 Hz	50 Hz	60 Hz	50 Hz	60 Hz	50 Hz	60 Hz	50 Hz / 380 V	60 Hz / 460 V
A601342	STS18-100	00	1.00	1.00	68	97	17	13	0.05	0.05	0.43	1.0
A601343	STS18-180	01	2.69	1.80	174	169	20	15	0.05	0.05	0.43	1.0
A601344	STS18-480	10	7.31	5.10	470	471	35	26	0.13	0.15	1.0	2.0
A601345	STS18-920	20	14	10	908	904	50	41	0.29	0.24	1.2	2.8
A601346	STS18-1310	20	19	14	1217	1305	53	46	0.29	0.24	1.2	2.8
A601347	STS18-1690	30	25	18	1587	1675	55	59	0.51	0.40	2.15	5.2

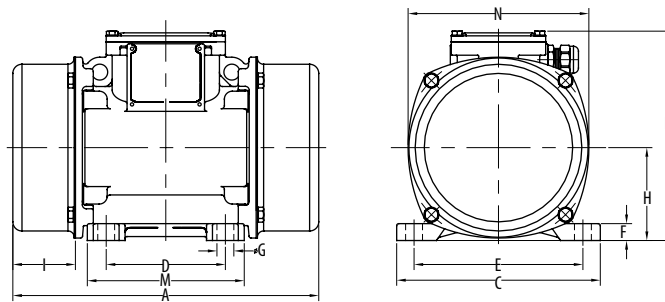
Stainless Steel Electric Vibrators

Overall Dimensions (inches)

P/N	Model	Frame Size	Type	A	B	C	D	E	F	Foot Holes		H	I	L	M	N
										ØG	No.					
A600328	STS36-380	00	A	8.27	5.98	4.92	2.44 - 2.91	4.17	0.39	0.35	4	2.40	1.77	3.94	4.02	4.61
A600329	STS36-480	01	A	8.82	6.22	4.92	2.44 - 2.91	4.17	0.39	0.35	4	2.64	2.05	4.37	4.02	5.04
A600330	STS36-660	10	A	10.16	7.01	5.98	3.54	4.92	0.55	0.51	4	2.87	2.20	4.88	4.61	5.55
A600331	STS36-1050	20	A	11.26	7.95	6.57	4.13	5.51	0.59	0.51	4	3.27	2.52	5.59	5.39	6.30
A600332	STS36-1680	30	A	12.24	8.39	8.07	4.72	6.69	0.67	0.67	4	3.70	2.56	6.61	6.30	7.17

Overall Dimensions (inches)

P/N	Model	Frame Size	Type	A	B	C	D	E	F	Foot Holes		H	I	L	M	N
										ØG	No.					
A601342	STS18-100	00	A	8.27	5.98	4.92	2.44 - 2.91	4.17	0.39	0.35	4	2.40	1.77	3.94	4.02	4.61
A601343	STS18-180	01	A	8.82	6.22	4.92	2.44 - 2.91	4.17	0.39	0.35	4	2.64	2.05	4.37	4.02	5.04
A601344	STS18-480	10	A	11.73	7.01	5.98	3.54	4.92	0.55	0.51	4	2.87	2.20	4.88	4.61	5.55
A601345	STS18-920	20	A	13.43	7.95	6.57	4.13	5.51	0.59	0.51	4	3.27	2.52	5.59	5.39	6.30
A601346	STS18-1310	20	A	15.00	7.95	6.57	4.13	5.51	0.59	0.51	4	3.27	2.52	5.59	5.39	6.30
A601347	STS18-1690	30	A	14.92	8.39	8.07	4.72	6.69	0.67	0.67	4	3.70	2.56	6.61	6.30	7.17



Type A

Low-Speed Electric Vibrators

Mechanical & Electrical Features

CD9 SPEED		CD7 SPEED		CD6 SPEED	
RPM	HZ	RPM	HZ	RPM	HZ
750	50	600	50	500	50
900	60	720	60	600	60

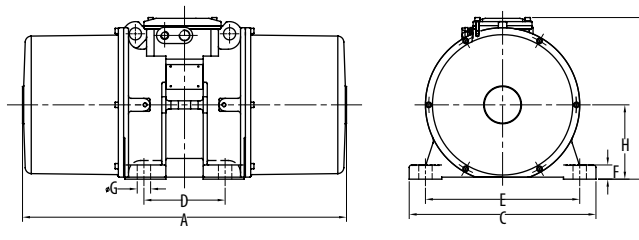
For 230 volt, 60 Hz amperage
double the 460 volt amperage.

Part Number	Model	Frame Size	MECHANICAL FEATURES						ELECTRICAL FEATURES			
			Unbalance <i>in-lbs</i>		Centrifugal Force <i>lbs</i>		Weight <i>lbs</i>		Power Output <i>Horsepower</i>		Max. Current <i>Amps</i>	
			50 Hz	60 Hz	50 Hz	60 Hz	50 Hz	60 Hz	50 Hz	60 Hz	50 Hz / 380 V	60 Hz / 460 V
Series CD9												
C602531	CD9-3320	184	144	144	2121	3314	283	283	0.83	1.0	3.0	3.1
C602532	CD9-5150	215	224	224	3293	5146	367	367	1.7	2.0	4.9	5.1
C602533	CD9-6890	256	299	299	4410	6891	535	535	4.2	5.0	7.3	7.5
C602534	CD9-9330	256	405	405	5969	9326	554	554	6.3	7.5	11.7	12.0
C602536	CD9-16600	286	720	720	10595	16555	916	916	8.3	10.0	13.8	14.3
Series CD7												
C602965	CD7-1700	184	115	115	1173	1700	328	328	0.8	1.0	3.2	3.4
C602958	CD7-3330	184	225	225	2300	3318	335	335	0.8	1.0	3.2	3.4
C602966	CD7-3290	215	224	224	2270	3290	418	418	1.7	2.0	3.6	4.6
C602953	CD7-5110	215	347	347	3548	5115	427	427	1.7	2.0	3.6	4.6
C602968	CD7-4400	256	299	299	3063	4410	485	485	2.5	3.0	5.8	6.1
C602959	CD7-6600	256	448	448	4580	6592	554	554	2.5	3.0	5.8	6.1
C602967	CD7-5940	256	405	405	4099	5940	554	554	4.2	5.0	8.0	8.4
C602952	CD7-9400	256	642	642	6564	9425	660	660	4.2	5.0	8.0	8.4
C602946	CD7-14700	286	996	996	10183	14663	960	960	6.3	7.5	10.6	11.2
C602960	CD7-18000	286	1220	1220	12473	17939	1072	1072	8.3	10.0	13.3	14.0
Series CD6												
C602957	CD6-2150	184	210	210	1491	2147	318	318	0.6	0.75	3.6	3.8
C602949	CD6-3310	215	324	324	2300	3309	419	419	0.8	1.0	4.1	4.3
C602950	CD6-5100	256	499	499	3543	5097	534	534	1.7	2.0	6.2	6.5
C602951	CD6-6600	256	642	642	4558	6559	652	652	2.5	3.0	7.1	7.5
C602947	CD6-9150	286	897	897	6369	9171	878	878	4.2	5.0	8.2	8.6
C602948	CD6-14600	286	1432	1432	10167	14639	1138	1138	6.3	7.5	11.4	12.0

Overall Dimensions (inches)



P/N	Model	Frame Size	Type	A	B	C	D	E	F	Foot Holes		H
										ØG	No.	
Series CD9												
C602531	CD9-3320	184	A	25.90	12.28	13.39	6.30	11.02	0.98	1.02	4	5.91
C602532	CD9-5150	215	A	23.78	13.78	15.35	7.87	12.60	1.18	1.10	4	6.38
C602533	CD9-6890	256	A	27.09	15.67	18.11	7.87	14.96	1.38	1.30	4	7.20
C602534	CD9-9330	256	A	31.42	15.67	18.11	7.87	14.96	1.38	1.30	4	7.20
C602536	CD9-16600	286	A	35.12	19.80	20.79	7.87	17.32	1.38	1.30	4	7.37
Series CD7												
C602965	CD7-1700	184	A	25.90	12.28	13.39	6.30	11.02	0.98	1.02	4	5.91
C602958	CD7-3330	184	A	25.90	12.28	13.39	6.30	11.02	0.98	1.02	4	5.91
C602966	CD7-3290	215	A	31.42	13.78	15.35	7.87	12.60	1.18	1.10	4	6.38
C602953	CD7-5110	215	A	31.42	13.78	15.35	7.87	12.60	1.18	1.10	4	6.38
C602968	CD7-4400	256	A	31.42	15.67	18.11	7.87	14.96	1.38	1.30	4	7.20
C602959	CD7-6600	256	A	31.42	15.67	18.11	7.87	14.96	1.38	1.30	4	7.20
C602967	CD7-5940	256	A	31.42	15.67	18.11	7.87	14.96	1.38	1.30	4	7.20
C602952	CD7-9400	256	A	31.42	15.67	18.11	7.87	14.96	1.38	1.30	4	7.20
C602946	CD7-14700	286	A	35.12	19.80	20.79	7.87	17.32	1.38	1.30	4	9.37
C602960	CD7-18000	286	A	35.12	19.80	20.79	7.87	17.32	1.38	1.30	4	9.37
Series CD6												
C602957	CD6-2150	184	A	25.90	12.28	13.39	6.30	11.02	0.98	1.02	4	5.91
C602949	CD6-3310	215	A	27.95	13.78	15.35	7.87	12.60	1.18	1.10	4	6.38
C602950	CD6-5100	256	A	27.09	15.67	18.11	7.87	14.96	1.38	1.30	4	7.20
C602951	CD6-6600	256	A	31.42	15.67	18.11	7.87	14.96	1.38	1.30	4	7.20
C602947	CD6-9150	286	A	35.12	19.80	20.79	7.87	17.32	1.38	1.30	4	9.37
C602948	CD6-14600	286	A	35.12	19.80	20.79	7.87	17.32	1.38	1.30	4	9.37



Type A

MTF Electric Vibrators

Mechanical & Electrical Features

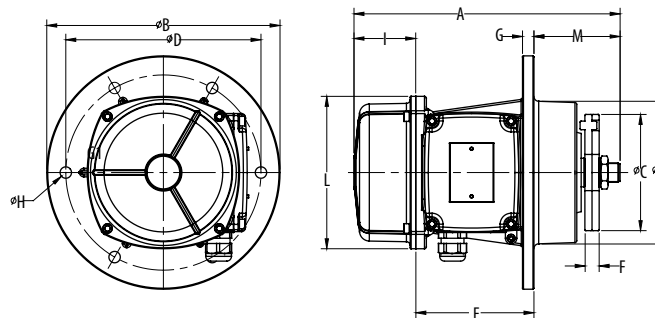
Part Number	Model	MECHANICAL FEATURES							ELECTRICAL FEATURES			
		Frame Size	Unbalance <i>in-lbs</i>		Centrifugal Force <i>lbs</i>		Weight <i>lbs</i>		Power Output <i>Horsepower</i>		Max. Current <i>Amps</i>	
			50 Hz	60 Hz	50 Hz	60 Hz	50 Hz	60 Hz	50 Hz	60 Hz	50 Hz / 380 V	60 Hz / 460 V
C600375	MTF36-380	00	1.00	1.00	269	385	11.9	11.9	0.17	0.17	0.35	0.3
C600369	MTF36-480	01	1.82	1.30	467	482	16.53	16.09	0.17	0.17	0.35	0.3
C600370	MTF36-660	10	2.61	1.77	670	653	24.7	24	0.24	0.25	0.6	0.5
C600378	MTF36-1050	20	4.33	2.81	1109	1038	33	31	0.45	0.52	0.8	0.75
C600380	MTF36-1680	30	6.77	4.51	1730	1662	38	36	0.67	0.7	1.1	1.0
C600285	MTF36-2530	35	10.20	6.30	2602	2529	51	49	1	1.2	1.7	1.6
C601403	MTF18-480	10	7.31	5.10	470	471	31	29	0.13	0.13	0.4	0.4
C601405	MTF18-920	20	14	10	908	904	37	34	0.29	0.37	0.6	0.6
C601406	MTF18-1310	20	19	14	1217	1305	49	45	0.29	0.37	0.6	0.6
C601407	MTF18-1690	30	25	18	1587	1675	53	50	0.51	0.66	0.9	1.0
C601280	MTF18-2150	35	36	24	2302	2163	77	67	0.54	0.67	1.0	1.0
C602354	MTF12-760	30	25	18	708	745	51	53	0.3	0.36	0.7	0.7

MTF Electric Vibrators

Overall Dimensions (inches)



P/N	Model	Frame Size	A	ØB	ØC	ØD	E	F	Foot Holes		G	I	L	M	P
									ØH	No.					
C600375	MTF36-380	00	7.44	5.11	3.39	4.29	5.2	0.29	0.33	4	0.39	1.42	3.78	0.87	--
C600369	MTF36-480	01	8.84	8.32	3.93	7.4	5.9	.83(50Hz) .71(60Hz)	0.47	4	0.39	2.28	4.06	0.89	--
C600370	MTF36-660	10	9.72	8.46	4.33	7.36	6.97	.71(50Hz) .47(60Hz)	0.47	4	0.51	2.13	5	0.87	--
C600378	MTF36-1050	20	11.00	9.65	5.9	8.07	5.11	.71(50Hz) .47(60Hz)	0.47	6	0.47	2.56	5.71	3.56	6.38
C600380	MTF36-1680	30	11.85	10.20	5.91(50Hz) 5.19(60Hz)	9.1	7.17	0.71	0.59	6	0.59	2.48	6.69	2.2	5.9
C600285	MTF36-2530	35	15.07	10.98	5.7	10	--	1.2(50Hz) .83(60Hz)	0.55	4	0.69	2.26	--	2.48	9.01
C601403	MTF18-480	10	11.52	8.46	4.49	7.36	6.97	1.9(50Hz) 1.7(60Hz)	0.47	4	0.51	3	5	1.75	--
C601405	MTF18-920	20	13.20	9.65	5.12	8.1	5.12	2.3(50Hz) 1.6(60Hz)	0.47	6	0.47	3.67	5.7	4.66	6.38
C601406	MTF18-1310	20	14.80	9.64	5.12	8.1	5.12	3.1(50Hz) 2.3(60Hz)	0.47	6	0.47	4.48	5.7	5.45	6.38
C601407	MTF18-1690	30	14.98	10.24	6.06	9	7.16	2.3(50Hz) 1.8(60Hz)	0.59	6	0.59	4.17	6.69	3.64	5.9
C601280	MTF18-3190	35	16.78	10.98	7.48	10	--	1.93	0.55	4	0.69	2.26	--	3.32	9
C602354	MTF12-760	30	14.98	10.24	6.06	9.06	7.17	2.32	0.59	6	0.59	4.17	6.74	3.64	5.91



MVB/VB Electric Vibrators

Mechanical & Electrical Features

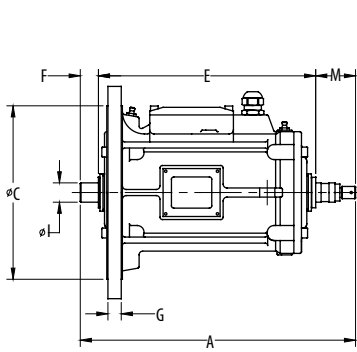
Part Number	Model	MECHANICAL FEATURES					ELECTRICAL FEATURES			
		Frame Size	Centrifugal Force <i>lbs</i>		Weight <i>lbs</i>		Power Output <i>Horsepower</i>		Max. Current <i>Amps</i>	
			50 Hz	60 Hz	50 Hz	60 Hz	50 Hz	60 Hz	50 Hz / 380V	60 Hz / 460V
C602270	MVB12-1000	40	1784	1996	53	53	0.6	0.69	1.4	1.35
C602239	MVB12-1510	50	---	2536	---	93	---	0.76	---	1.5
C602078	MVB12-2500	60	---	4892	---	148	---	1.32	---	2.3
C602079	MVB12-4500	80	---	9330	---	342	---	3.9	---	5.5
C601276	MVB18-1000	40	3116	2168	53	53	0.99	1.2	2.51	1.5
C601287	MVB18-1510	50	3307	3307	120	120	1.2	1.3	2.1	2
C601134	MVB18-2500	60	5493	5493	148	148	2.3	2.9	3.9	4.1
C601135	MVB18-4500	80	10006	10006	287	287	4.4	4.6	6.7	5.8
C601136	MVB18-7000	90	16012	16012	437	437	7.4	7.5	11.8	10.2
C602171	VB12-2510	VB	5512	5512	135	135	2.3	2.5	5.5	4.1
C601223	VB18-2510	VB	5512	5512	150	150	2.5	2.5	5	4.1

MVB/VB Electric Vibrators

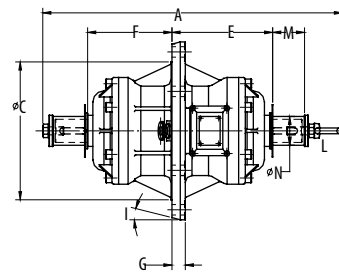
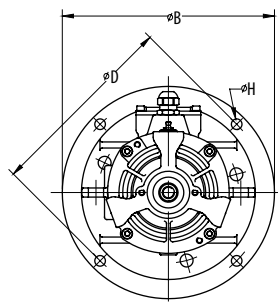
Overall Dimensions (inches)



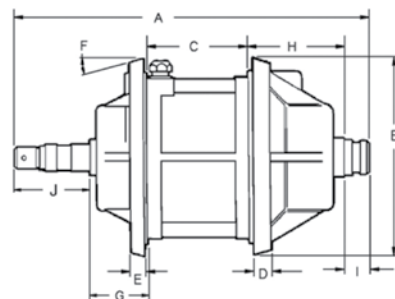
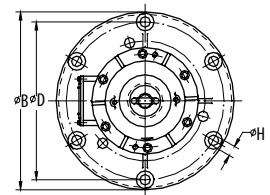
P/N	Model	Frame Size	Type	A	ØB	ØC	ØD	E	F	Foot Holes		G	M
										ØH	No.		
C602270	MVB12-1000	40	A	14.25	10.98	8.98	10	11.25	0.94	0.55	4	0.69	2.06
C602239	MVB12-1510	50	B	18.74	13.78	10.24	12	5.9	5.78	0.83	6	1.06	NA
C602078	MVB12-2500	60	B	22.84	13.75	10.24	12	6.37	6.27	0.83	6	1.06	NA
C602079	MVB12-4500	80	B	26.54	15.75	12.2	13.98	7.47	7.47	0.93	6	1.18	NA
C601276	MVB18-1000	40	A	14.25	10.98	8.98	10	11.25	0.94	0.55	4	0.69	2.06
C601287	MVB18-1510	50	B	18.74	13.78	10.24	12	5.9	5.78	0.83	6	1.06	NA
C601134	MVB18-2500	60	B	22.84	13.75	10.24	12	6.37	6.27	0.83	6	1.06	NA
C601135	MVB18-4500	80	B	26.54	15.75	12.2	13.98	7.47	7.47	0.93	6	1.18	NA
C601136	MVB18-7000	90	B	28.82	20.00	13.7	17.24	8.78	8.84	0.98	8	1.258	NA
C602171	VB12-2510	VB	C	20.39	11.06	6.02	1.18	1.02	14 deg	0.55	4	3.36	NA
C601223	VB18-2510	VB	C	20.39	11.06	6.02	1.18	1.02	14 deg	0.55	4	3.36	NA



Type A



Type B



Type C

MARTIN® Electric Vibrators SUMMARY SHEETS

Martin Engineering has made every effort to ensure the accuracy of the information contained within this document. Specifications are subject to change without notice. Certified drawings with the most current information are available through the engineering department. Contact OEM Customer Service Department at 800-544-2947.



QUALITY MANAGEMENT SYSTEM
CERTIFIED BY DNV
=== **ISO 9001:2000** ===

| L3805-12/09 |
| © Martin Engineering Company 2006, 2009 |

MARTIN ENGINEERING USA
One Martin Place
Neponset, IL 61345-9766 USA
800-544-2947 or 309-594-2384
FAX: 309-594-2432
www.martin-eng.com