

# BRUTE®

## Pneumatic Motor-Driven Vibrators

### CCV Series

With an integral clamp foot, these powerful vibrators suit portable applications like railcar unloading. Also available for hydraulic power.

### DV Series

For permanent installation on large vessels, these vibrators come with four- or six-bolt-hole mount bases. Also available for hydraulic power.

### CV Series

CV Series Vibrators incorporate two bolt-holes for permanent mounting on hoppers, bins, or chutes. Also available for hydraulic or DC electric power.

### CC Series

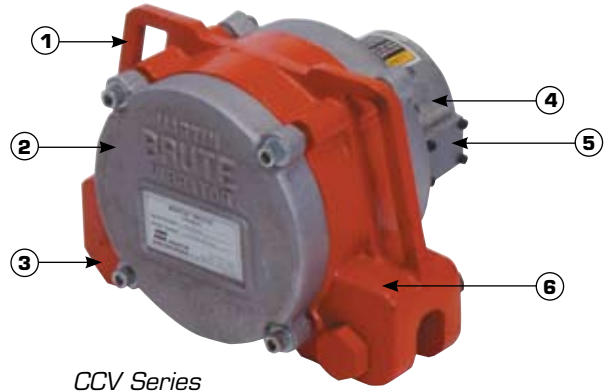
With its cradle lug bracket, the CC Series is suited for applications requiring portability and position changes. Also available for hydraulic power.

### Rule-of-thumb vibrator sizing:

One pound of vibrator force for every ten pounds of bin content. Mount vibrator as close as possible to material outlet. Reinforce mount area to prevent flexure of bin wall at mount location.

Force output data derived from vibrator mounted to 10,000-pound (4530 kg) test block. Frequency and force will decrease on less rigid block.

1. High-Grade Ductile Iron Case provides maximum durability.
2. Low-Maintenance Bearings require lubrication after 500 hours of service.
3. Integral Clamp Foot on CCV Series provides portability and positive mounting.
4. Powerful, Efficient Motor for long service life, minimal power consumption.
5. Tapped Exhaust Port allows muffler installation to reduce operating noise.
6. Adjustable Eccentrics allow tuning of force output of most models to match application.



CCV Series



DV Series



CV Series



CC Series

### PERFORMANCE DATA

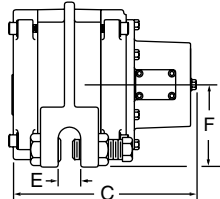
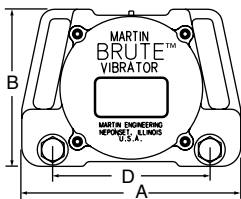
Model	Force Output				Shipping Weight		Part Number	
	Maximum		Minimum				w/Greased Bearings	w/Oil Bath Bearings
	lb	n	lb	n	lb	kg		
CC2.8-2A CV2.8-2A	5145	22,886	910	4048	45 49	20.4 22.2	29762 29763	N/A
CCV4-2A DV4-2A	5100	22,686	1500	6672	58 70	26.3 31.8	N/A	29769 29774
CCV6-12-6A DV6-12-6A	4177	18,580	3069	13,652	110 115	50.0 52.2	14716-01 18113-01	22107-01 22110-01
CCV6-25-6A DV6-25-6A	8212	36,529	5374	23,905	110 115	50.0 52.2	14716-02 18113-02	22107-02 22110-02
CCV6-50-6A DV6-50-6A	9605	42,725	5683	25,279	110 115	50.0 52.2	14716-04 18113-04	22107-04 22110-04

## BRUTE® Pneumatic Motor-Driven Vibrators

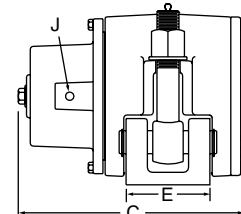
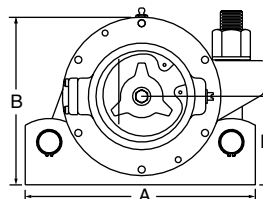
### DIMENSIONS

Model	A	B	C	D	E	F	G	H	J
CC2.8	9.0 (229)	7.12 (186)	9.09 (231)	N/A	3.0 (76)	3.87 (98)	N/A	N/A	0.5 (13)
CV2.8	9.87 (251)	6.87 (174)	9.81 (249)	8.0 (203)	3.0 (76)	3.44 (86)	0.875 (22)	0.75 (19)	0.5 (13)
CCV4	11.5 (292)	8.25 (210)	9.37 (238)	8.25 (210)	0.94 (24)	4.12 (205)	N/A	N/A	0.5 (13)
DV4	12.0 (305)	8.12 (206)	9.37 (238)	4 holes 2.5 x 10.5 (63.5 x 267)	4.0 (102)	4.0 (102)	0.875 (22)	0.625 (15.0)	0.5 (13)
CCV6	14.5 (368)	11.3 (287)	12.87 (327)	11.25 (286)	1.0 (25)	5.62 (143)	N/A	N/A	0.5 (13)
DV6	18.0 (457)	11.0 (279)	12.87 (327)	6 holes 2 x 2 x 16 (51 x 51 x 406)	6.0 (152)	5.69 (144)	1.12 (29)	0.75 (19)	0.75 (19)

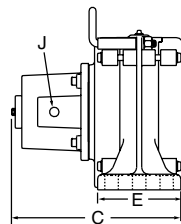
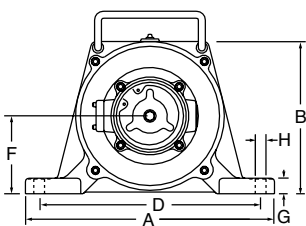
#### CCV Series



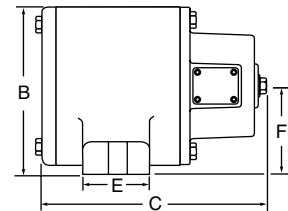
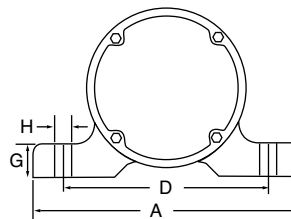
#### CC Series



#### DV Series



#### CV Series



**Martin Engineering USA**  
 One Martin Place  
 Neponset, IL 61345-9766 USA  
 800 544 2947 or 309 852 2384  
 Fax 800 814 1553  
[www.martin-eng.com](http://www.martin-eng.com)

Subject to change without prior notice.  
 Patents and patents pendings, ® registered  
 trademark of Martin Engineering Company in the  
 U.S. and other select locations.  
 Additional information can be obtained at  
[www.martin-eng.com/trademarks](http://www.martin-eng.com/trademarks).

QUALITY MANAGEMENT SYSTEM  
 CERTIFIED BY DNV  
**ISO 9001:2008**